

# Open Field

£1

September 2024



*Rev Alistair Littlewood with Stuart Rose, Ralph Creighton and the first sheaf of corn at the Lammas service, Laxton 2024*

The monthly publication of the  
parish of Laxton & Moorhouse

[www.openfield.org.uk](http://www.openfield.org.uk)



**Priest in Charge**  
**Churchwardens**

LAXTON  
MOORHOUSE  
KNEESALL  
WELLOW  
WELLOW

Vacant

Mrs Brenda Noble 01777 870541  
Mr Simon Hill 01636 822777

Vacant

Mr Ben Wells 01623 861309

Mrs Jean Crofts

Vacant

**P.C.C:**

**Chairman**

**Deanery contact number**

01636 650063

**Parish Council: Clerk**

Catherine Millward 01636 813387

**Parish Councillors: Chairman**

Mr Simon Hill 01636 822777

**Vice Chair**

Mr Jem Hill

**Members**

Mr Mark Hennell, Mr Stuart Rose,  
Mr Dave Sheard, Mrs Anna Moorhouse  
Mrs Rebecca Creighton

**Laxton Village Hall: Chairman**

Mr Dave Sheard 07941 625761

**Thoresby Estate Office**

01623 822301

**Magazine Editor**

Mrs Jean Hennell 01777 870276

**Magazine Advertising**

Mrs Joy Allison 01777 871506

Email: [advertising@openfield.org.uk](mailto:advertising@openfield.org.uk)

**Photography by / Photos from**

Janet Cooke, Dave & Helen Sheard,  
Anne-Marie Harriman, Janette Tate,  
Bridget Smedley, Diane Hunt, Dik &  
Joy Allison

**Open Field**

[www.openfield.org.uk](http://www.openfield.org.uk)

**We always welcome contributions and can help if you are not sure how to write what you want to say.**

**We believe all illustrations to be free to use. If anyone feels their image has been wrongly used, please get in touch.**

Contributions for the next edition to be with the Editor by **NOON ON 16th SEPTEMBER PLEASE. Earlier preferred.** You can send in your contributions at any time.



# A Message from our Churchwarden

## Church repairs

We have now got the hole in the south aisle roof repaired. This was caused by the gale dislodging the large drain pipe which went up to the main roof. It slid down and then went through the roof leaving quite a large hole.

Thanks to Lee, who has now renewed it all, we have been able to claim some of the cost from the insurance company.

We have also had the floor at the back of the pews taken up and levelled and relayed for safety reasons. This was another job that has wanted doing for a long time. Thanks also to Lee for doing this.

The problem we still have is the boiler, well not really the boiler, as that has been sorted. It is the water system, which has a leak, which we cannot find. As it has been in since the year 2000, I suppose we can expect problems.



*Brenda*

## Harvest Festival Service

**Laxton Church**

**Friday 13<sup>th</sup> September**

**7 pm**

**Everyone welcome**

## Sympathy - Johnny Godson



We were all sad to hear the news that Johnny Godson had passed away in Bassetlaw Hospital on 23rd July.

He was born on the 20th of April 1942 and baptised John Vaughan but most people called him Johnny. Other people called him Vaughan, which resulted in some people thinking there were two Godson brothers.

He lived in Laxton all his life, living and working on the farm and was the oldest farmer left in the village. He could tell a few stories about village life and how things have changed in his lifetime Johnny came from one of the old Laxton families who have been here for generations. His mother taught at the village school and

Johnny was Foreman of Top Field for many years.

He leaves his son, Andrew, and daughter Jo as well as his younger sister, Monica. Our thoughts and prayers are with them at this sad and difficult time.

The funeral was held at Ollerton Crematorium on Thursday August 15th followed by refreshments at Laxton Village Hall with catering by Laxton WI. The many cars in the village street in the afternoon were evidence of the excellent turn attendance of villagers and friends across the generations.

*Right: Johnny with his friends Ken Shepherd and Colin Cree, both late of Laxton. Thanks to Mike Manning for passing on this picture, supplied by Anne-Marie Harriman, with the thought that it is a memory of three gentlemen who contributed a lot to Laxton and who are now, no doubt, putting the world to rights now they are back together again.*



## Get Well Soon

It was lovely to see Jem in church on Lammas Day, helping with the barbecue after his recent operation and stay in hospital. We are so glad to hear that he is on the mend and send very best wishes for a full and speedy recovery.

*Brenda*

## Lammas Service



We held our annual Lammas Day service on Sunday 4<sup>th</sup> August. It was conducted by the Rev. Alistair Littlewood. It was and was a first for him as not many churches have kept this old traditional service going. We were joined by friends from Kirton, Moorhouse, Boughton

and Walesby.



The lessons were read by Stuart Clarke and Simon Hill. The speakers were Brenda Noble, Mike Jackson, Rebecca Creighton, John Jonathan Price and Sylvia P. The sheaf was presented by Stuart Rose, the bread by Anna Hill, the wine by Janet Cooke and the collection by Eva and Eliza M. The service started with Common Prayer and ended with Common Prayer Communion. We sang the good old harvest

hymn 'We Plough the Fields and Scatter'.

Thanks go to Simon and Anna for providing us with bacon cobs and mushrooms, which went down very well followed by tea and coffee. Once again, thank you to all those who took part and to everyone for coming. it's nice to see so many in church on a Sunday morning.

*Brenda*





# Laxton Harvest Competition Time

**Please bring your entries to church  
between 2pm and 4pm  
on Saturday September 14th.**

Anyone can enter. You don't have to live in Laxton and you don't need to have entered before. Just have a go. You might surprise yourself.

**Full details of the classes appear opposite.**

There are also classes for photographs, and through the year we have seen some lovely shots in Open Field. There is no set size, so you can enter any prints you like. Just remember for the front cover of Open Field it needs to be landscape format.

## Volunteers wanted

A New Annual Event

## Community Tidy-Up

**Sunday 22nd September 2024**

The focus this year is:-

## Laxton Church & Churchyard

Meet in the churchyard, **10:00** hrs start.

Come dressed for sanding, painting and cleaning etc.

Light refreshments provided.

Contact Dave Sheard for more details or to put your name down.



**St Michael the Archangel, Laxton**  
**Harvest Produce Show and Competition**  
**September 14<sup>th</sup> 2024**



**Classes**

**Class 1**

- A 3 potatoes
- B 3 onions
- C 3 beetroot
- D 3 leeks
- E 3 carrots
- F 1 marrow
- G 1 pumpkin
- H 3 tomatoes
- I 3 runner beans
- J Any other produce

**Class 2**

- A 3 eating apples
- B 3 cooking apples
- C 3 pears

**Class 3**

- A Jar of chutney
- E Jar of jam
- F Jar of jelly
- H Jar of lemon curd

**Class 4**

- A Victoria sandwich cake (no cream)

- B Decorated sandwich cake (any flavour)
- C Fruit cake
- D Plate fruit pie
- E 4 small cakes (buns)
- F 4 small sweet pastries
- G 4 fruit scones
- H 4 cheese scones
- I 4 tray bakes

**Class 5 - Photograph**

- A A Country Scene
- B It's Spring Time
- C A wild creature
- E Picture suitable for the cover of 'Open Field'

**Class 6**

**Flower Arrangement**

- A Hydrangea head in a vase
- B Single stem rose in a vase
- C Bowl of floating flowers
- D One bloom, one veg
- E Autumn Arrangement

**CRAFT**

**Class 7**

Craft item, any medium, made in the last year

**CHILDREN'S COMPETITIONS:**

**Class 8 (up to 6 years)**

- A A Painted Flower Pot
- B Vegetable or fruit sculpture
- C Harvest Collage
- D A Jar of Flowers

**Class 9 (7 to 11 years)**

- A A Painting of Harvest
- B Vegetable or fruit sculpture
- C Model from Lego or similar
- D Hand made greetings card

We welcome additional donations of produce, preserves or home baking for auction, which is held in church at 5.00pm after the service. These can be left in church on the **Saturday, or Sunday of Harvest Weekend from 3:30pm** when the winning entries may also be viewed. **We will also be collecting non-perishable gifts for a local Food Bank.**

**This event will support general Church funds and a local Food Bank**

# Community BBQ

## BRINGING THE COMMUNITY TOGETHER

Following a short shower of rain around 3pm on Saturday 10th August, the sun reappeared and we were treated to a balmy evening beneath blue skies and white fluffy clouds, for the second, and we hope annual, Laxton Village BBQ that commenced at 4pm.

David, Dan, Sarah and I would like to thank everyone - all 6-0 of them - who attended the



evening. The garden was full of chatter and laughter.

Once again the feedback regarding the food was faultless. Meat from Maloney's, delicious salads, strawberries and cream. This year we did dilute the Pimms!



Soft drinks and beer were also on hand.

I would like to thank 'The Jolly Beggars' who provided our live music, one of whom is a near neighbour from Kirton.



Thanks too to Helen W, Di J, Sarah L and Sarah S who bought either an additional dish or flowers/wine.

*Helen*

**ADVANCE NOTICE**

## **WI FASHION SHOW**

**THURSDAY 3RD OCTOBER**

**LAXTON VILLAGE HALL**

**TICKETS £6 INCLUDING REFRESHMENTS**

**7 PM REFRESHMENTS 7:30 PM FASHION SHOW**

**TICKETS FROM BRENDA 870541**

**MARGARET 07826 429987**

# LEE DOYLE

## Building Contractor

New Houses, Extensions,  
Groundworks, Roofing,  
Damp-proofing & Dry Lining,  
Paving & Patios, Minor Repairs.

10 Elm Tree Rise  
Kneesall  
Newark  
Notts



## Britnell Tree Services



### All Aspects of Tree Works

includes felling, crown reductions  
crown thinning, crown lifting, pollarding

### Gardening & Landscaping

Reliable & Trustworthy Fully Insured &  
Qualified

All works carried out to BS3998

**Call Will today for your free quote on**

**07821 342942 or 01636 702807 or  
email**

**BritnellTreeServices@gmail.com**

MUSIC  
THEORY  
AND  
PIANO  
ROYAL  
SCHOOLS



Quality Paintings

or Drawings

# GRAHAM LAUGHTON B.A.

PICTURE  
FRAMING  
SERVICE &  
RESTORATION



**01777 472885 or**

**07999 528397**

[grahamlaughton50@gmail.com](mailto:grahamlaughton50@gmail.com)

# Stuart Rose

DESIGNER AND MAKER OF  
ORNAMENTAL IRONWORK

SECURITY GRILLES, RAILINGS, SCROLLWORK & GATES FOR HOME  
& BUSINESS

GENERAL BLACKSMITHING

IRONWORK REPAIRS & WELDING



# Beeby Plumbing

All plumbing enquiries please call:

**Guy Beeby**

**07792 484876**

**01636 822103**

Oftec qualified.

Fully insured.

• Domestic Plumbing •

• Taps to Toilets Installation & Repair •

• Central Heating Installation & Repair •

• Oil Boiler Installation & Service •

No Gas Work

[guy.beeby@btinternet.com](mailto:guy.beeby@btinternet.com)

## SEPTEMBER CONGRATULATIONS

*Congratulations to everyone celebrating this month. The birthday roll of honour is: Anne D (93), Mel Voce, Paula Doyle, Jo Godson, Melanie P, Diane W., Jean, Christopher Hill, Amelie Beckitt, Neil R, Graham Laughton and Keith Morton, Neville S.*

*Anniversaries this month: Neil & Rachel Hennell and Roger & Alison Beckitt, Dave & Helen Sheard and anyone else celebrating this month.*

*Very best wishes to everyone mentioned. To anyone we may have missed, we wish you all a wonderful day and a happy and healthy year to come.*

*If you would like a mention for your special day, however long you have been associated with Laxton or Moorhouse, we would be happy to do so.*



Brenda

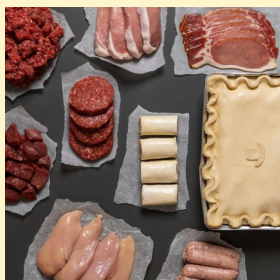


# **THE COUNTRY VICTUALLER BUTCHERS & BAKERS**

Award winning handmade pork pies,  
oven ready pies, cured bacon, free range pork  
and Longhorn Thoresby beef

Heritage recipes and a warm welcome await  
you at our Tuxford Pod.

- Order & Collect
- Free kerb side parking
- Daily hot food to go specials
- Loyalty card rewards
- Senior Citizens' 10% off Wednesday



Opening Hours:  
Tue - Fri 8am - 4pm, Sat 8am - 4pm  
Closed Sunday & Monday

**01777 874700**

Subscribe to our newsletter to receive online offers!

<https://thecountryvictualler.co.uk/newletter-subscription>

Nationwide delivery.

[thecountryvictualler.co.uk](https://thecountryvictualler.co.uk)

**ASHVALE ROAD, TUXFORD, NG22 0NH**

# Tour of Britain, Friday 6th September

We have barely had time to bring news of the Tour of Britain visiting the area once again in 2024. They are coming on **Friday 6th September 2024**.

The race will not come through Laxton, but will come through Ossington (approx. 1.16pm), Moorhouse (1.19) and Egmonton (1.25) before turning up towards Tuxford. As previously, there will be a rolling programme of road closures.

The Ossington Coffee Morning group are arranging a social and light refreshments at the Hut to cover this period and everyone is warmly welcomed. Donations collected will go to the Lincs & Notts Air Ambulance.

The best viewpoint in Ossington is close to the Hut at the War Memorial corner. Spectators will need to be there at least 30 minutes before the projected arrival time because of the rolling road closures, which will prevent access for around an hour. Similar closures will apply in the other local communities being visited, so please note regardless of your interest in the race.

## Coffee Morning Corner

The coffee mornings locally are back and waiting to welcome you in September

1st Saturday 15 Kirton Park, Kirton 10.30am **7/9/24**  
**in aid of Sir John Eastwood Hospice**

2nd Saturdays Egmonton Village Hall 10 - 12 **14/9/24**

3rd Saturdays Laxton Village Hall, 10.30 - 12.30 **21/9/24**  
**in aid of Dementia Charities**

4th Saturdays Ossington Hut, 11 - 1 **No event**  
The Ossington group are providing **refreshments for Tour of Britain spectators on Friday 6th September** instead. Donations to the Air Ambulance. See above.

**Coffee morning as usual in October on 26th**

# Laxton History Group



On July 24th we paid a visit to Doddington Hall and gardens, where we were given a guided tour of the Hall.

An impressive total of 21 members went on the trip and had to split between two guided tours as the maximum number is 14 on each.

Luckily it dawned dry and reasonably clear, though not as very hot as had been suggested. In fact it was very pleasant for walking round the grounds to look at the exhibition.



The Hall tour started in the dining room, where we learned that the impressive table was nowhere near as old as it looks. It was made in the late 1950s to celebrate the previous owners' 25th wedding anniversary. It is made from a single oak tree grown on the estate using traditional techniques. It is much larger than its predecessor which stands at the end of the room dressed with silverware.



We went into the 'tiger bedroom', named after a large tiger picture which used to hang there. The room is dominated by a big four poster bed which had been reduced in size to get it in when it was brought to Doddington from another estate. The big patterned red drapes draw the eye, and it was surprising to learn that the pair at the foot of the bed had been made to match by the original fabric manufacturer, who still had the patterns. It is incredible to think that such craftsmanship still exists and can make an almost undetectable match.

On each level our guide had some new gem of information. We learned that of the two oriental cabinets on a landing, one is genuine and the other a copy. From here we were also afforded a glimpse of the gardens yet to be visited, including the extensive kitchen garden which supplies the shop and restaurants.



We had been promised an explanation for the precise location of the house, and this was revealed on the top floor when we were shown the view of Lincoln Cathedral.

In the same room is an enormous portrait authenticated as painted by Joshua Reynolds. This had to be sold to cover death duties at one point and as it was impossible to remove it from



the room because of its size, it remains on permanent loan.

Our guide left us at this point and we had the opportunity to make our way back down at our own pace, looking at rooms which were too small for the whole group to get into.

Outside awaited the sculpture exhibition, which is held here in alternate years. There is a

collection of representations of human figures in the garden at the front of the house, while through the garden there were more figures, animals, plants and abstract sculptures. There was something to suit all tastes, and they were staged throughout the gardens and the walled garden. A display of smaller pieces were on show in the barn where the baubles are sold at Christmas.

It was a lot to see at one go and several people hope to return to see more.

On 21st August, Dave and Helen Sheard once again invited us to an afternoon tea in their lovely garden. We are all looking forward to joining them and hope the weather is as kind as last year.



On **18th September**, we will welcome back **John Whitfield**, a popular and very knowledgeable speaker. He will be telling us about **'Women Pilots of World War II'**. The meeting will **start at 7.30pm** as usual and we will be delighted to see any visitors, or indeed else who would care to come along.

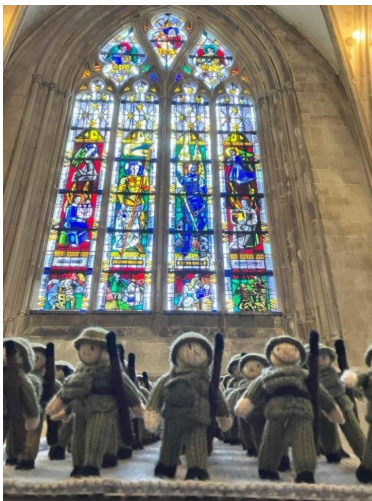
# The Longest Yarn at the Minster



The D-Day 80th anniversary, commemorated as The Longest Yarn, comes to Southwell in UK -first. The Longest Yarn is an 80m long 3D depiction of that fateful day, 6th June 1944, in wool art.

With 80 displays, each measuring one metre in length, depicting scenes of the world's

largest amphibious invasion, The Longest Yarn is something quite unique and not to be missed. The scenes include the build-up to D-Day in England, the horrors on the Landing Beaches and the bloody inland battles.



The display is being moved from Carentan, France, where it was exhibited for the first time ever in May. Southwell is privileged to be the first place in the UK to display it.

The exhibition is free of charge and runs from 9<sup>th</sup>-27<sup>th</sup> September 2024 between 9 am and 5pm (4.30 Sundays). An accompanying book will be on sale, giving more information on each of the 80 scenes, including pictures from 1944 to show visitors what each scene was based on.

The Longest Yarn are a non-profit Association and self-fund the exhibition. Donations will be welcome.

Some of the scenes depict actual WW2 veterans who were there in Normandy on 6th June. These include the famous moment Lord Lovat and Piper Bill Millin crossed Pegasus Bridge, and when he plays his pipes on Sword Beach. Piper Millin's son donated his father's favourite jumper to be unravelled and used to knit the figures of Piper Bill. Piper Millin's son, John, will be coming to speak to Laxton History Group about his father in February 2025.

## Garden Fête

As I said in last months 'Open Field', I would like to say a big thank you to Jean, Roy and Mel for all their hard work and letting us use their garden for our annual Garden Fête.

To everyone who helped before and on the night and clearing away after - a big thank you. It is not an easy job holding the event outside, but that's why they call it a 'Garden Fête', and we have to depend on the weather. Thanks to Joy for putting an overall report in the magazine for us last month.

After a quick tot up at the end of the evening we thought we had raised a total of £627 but now, through extra donations and Jean taking the leftover tombola to the coffee morning, the total has risen to £683 so once again a huge thank you to everyone. *Brenda*

## Owl Report from Mike Jackson



Sadly this has been a very poor season for our owls which breed in the Parish. We have only found one successful pair of owls in the 15 owl boxes that we now have. This was a Tawny Owl (shown left) which now sports a ring on its leg, put on in May, showing its name and address.

One pair of barn owls managed to produce 7 eggs but only 3 young hatched. None of them survived however because of a shortage of food and wet weather which prevents the adults from hunting. Normally the adult owls will

eat their young if food is scarce. This is a clever survival mechanism so that the parents can live to breed again at a later date.

It is thought that the wet weather during the past 10 months flooded out the homes of the bank voles and other small mammals leading to a poor breeding season for these creatures on which our owls rely.

The barn owls can nest again in late summer if food is available, but the Tawny Owls only get one chance.

If you are unlucky enough to find a dead owl, please check to see if it has a ring on its leg. *Mike Jackson*



# Village Hall News

There is fantastic news on the Newark & Sherwood District Council Community Grant applications: we have been successful with all three, so:

- ♦ a dance fit class
- ♦ luncheon club and
- ♦ WIFI hotspot

are coming to a village hall near you.

We hope to start the luncheon club in October. The suggested menus for the first three, are roast chicken, roast pork and a Christmas dinner in December.

Please let me know if you are interested in coming along, or if you know someone who would like to join in. The club will be open to anyone living locally. The plan is to prepare the food together, cook it and eat it together, whilst we have a chat and a laugh. This will run once per month for 6 months from October.

Hopefully, the dance fit, will also start in October. I already have a few names down. They are all ladies so far apart from me! Don't be shy fellas. There's still plenty of space, so dig out your legwarmers and dust off your lycra and come and have a bit of fun.

More details on everything, next time.

We are looking for a new additional annual event, September/ October time to supplement the two quizzes and our new May Disco. A barn dance has been suggested. Do you know of a suitable barn? Would you come?

Do you have any other ideas?

The autumn quiz has been moved to 29<sup>th</sup> November to avoid the Christmas rush. It is going to be the usual format. Roger & Joan have kindly agreed to be the quiz masters again. Contact me, or any of your trustees to book a place or table.



*Dave Sheard*  
Orchard View  
07941 625 761




# **Moorhouse Harvest Festival Service Moorhouse Church Friday 20<sup>th</sup> September 7 pm Everyone welcome**

## **Friendly & caring residential homes for your loved ones**

At Ashall Care, we have genuine affection for our residents. It matters to us and it matters to our residents. Our dedicated and long-serving team of friendly carers are tirelessly committed to the wellbeing and happiness of residents' lives.

24-hour residential care, offering permanent and respite accommodations

**Contact us to book a visit to see what we can offer**



**Barnby Court**  
CARE HOME

**Barnby Court Care Home**  
Great North Road, Barnby Moor  
Retford DN22 8QS  
01777 705902



**Farthings**  
RESIDENTIAL CARE HOME

**Farthings Residential Care Home**  
Old London Road, West Drayton  
Retford DN22 8ED  
01777 838219

Email: [info@ashallcare.co.uk](mailto:info@ashallcare.co.uk) Website: [ashallcare.co.uk](http://ashallcare.co.uk)



# **HILLCREST: Equestrian Services**

- |  |  |
|--|--|
| <input checked="" type="checkbox"/> Full livery    | <input checked="" type="checkbox"/> Riding lessons       |
| <input checked="" type="checkbox"/> Breaking       | <input checked="" type="checkbox"/> Secure               |
| <input checked="" type="checkbox"/> School livery  | <input checked="" type="checkbox"/> CCTV                 |
| <input checked="" type="checkbox"/> Rehab stabling | <input checked="" type="checkbox"/> BHS Regd.            |
| <input checked="" type="checkbox"/> Holiday livery | <input checked="" type="checkbox"/> Qualified instructor |
| <input checked="" type="checkbox"/> Selling livery | <input checked="" type="checkbox"/> Fully insured        |

Please phone or see web site  
for further information

**Tel: 07359 141 051**

**www.hillcrests.co.uk**

**email: hillcrests@outlook.com**

# **HILLCREST: Gardening Centre**

- |   |   |
|---|---|
|  Fertiliser       |  Bedding plants    |
|  Compost        |  Hanging baskets |
|  Seeds & bulbs  |  Giftware        |
|  Shrubs & trees |  Fruit & Veg     |

**Everything for your garden:**

**Open from 9am, closed Tues & Weds**

(for more details see web site)

**Tel: 07576 140 107**

**www.hillcrests.co.uk**

**Now  
Open**

## Laxton Sports Field Bonus Ball Draw

Since last month, Bonus Ball numbers 29 and 44 have been kindly taken by Daphne Sanford (Karen's Mum) No 29 and by Simon and Anna Hill No 44 respectively.

As a result we now have only five of the 59 numbers available for anyone who would like an additional one or a new member.

The available numbers are: .

**34, 37, 51, 52, 53**

As a reminder, all proceeds go to supporting the Laxton Sport and Recreation Field facilities.

## Peace Doves at Lincoln Cathedral



Peace Doves is a mass-participation artwork created by sculptor, Peter Walker.

The beautiful installation is made up of thousands of paper doves which will be suspended above the Cathedral's Nave and is accompanied by music composed by David Harper.

Members of the public have been invited to come and write messages of peace, hope and love on paper doves since 1st May. The organisers hoped that more than 10,000 doves would be created to form a stunning artwork which will hang

from the ceiling of the nave and be available for everyone to see from the beginning of September.

Visitors, schools and local community groups have all taken part and the paper birds have now been assembled into a magnificent display.

The image above was taken in October 2022 in Sheffield Cathedral. The artwork has been created in a number of cathedrals, but because each uses birds written on by local people, and each hangs in a different space, they are all unique. Peace Doves will be on display **from 5<sup>th</sup> September to 14<sup>th</sup> November 2024.**





**'Movement and Light'**  
*An Exhibition*  
of original paintings by  
**Malcolm Coward**  
23rd Sept - 12th Oct 2024

Private View  
Sunday 22nd Sept 2 - 4pm  
please ask.

at:  
Sally Mitchell's Gallery  
Market Place, Tuxford.

info@sallymitchell.com 01777 838234  
sallymitchell.com



## Trinity Cottage B&B, Tuxford

Relax in Style

Luxury en-suites, Visitors'  
Lounge & Courtyard, TV, Wi-Fi

Evening meals on request

If you are local and have no room for visitors to stay, we can accommodate them, or maybe if you are looking for a base to explore this interesting and beautiful area, we offer a quiet location in the centre of the village. There are all amenities, gift and coffee shops, museums and galleries, buses to Lincoln, Newark and Retford.

2 nights in our double room: £150 including full English breakfast or alternatives.

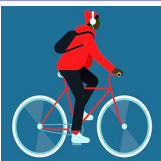
**Phone Richard on 07836 699911**

# Sports Field Bonus Ball Weekly Draw

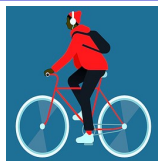
13/7/24	59	Karen Sanford
20/7/24	44	ROLLOVER
27/7/24	58	Anna Hill
3/08/4	07	Richard W
10/8/24	12	Roy & Jean Hennell

Since last month, Bonus Ball number 2 has been kindly been taken by Dave and Helen Sheard so we now have 7 of the 59 numbers available for anyone who would like an additional one or who would like to become a new member.

The available numbers are: **34, 37, 51, 52, 53** As a reminder, all proceeds go to supporting the Laxton Sport and Recreation Field facilities.



## Ride and Stride (for churches)



**Saturday, September 14th, 2024**

**Sponsored bike ride.**

**How many churches can you visit From 10 am to 6 pm?  
in aid of**

**Nottinghamshire Historic Churches Trust.**

## Sherwood Forest Rotary

**Supporting the Local  
Community**

**07711 802683**

**Meeting every 2nd  
Wednesday at  
Ollerton House Hotel**

**Visitors always welcome  
[www.rotary.org/1220](http://www.rotary.org/1220)**

## Wellow Heritage Talks

**in The Old Schoolroom**

**7th September: Talk: 'The  
Dukeries' by Denis Hill. 12.00  
noon**

**7th September. Wellow  
Village Heritage Walk. From  
the Schoolroom 1.30pm**

**To register for these events  
email  
[denishill1066@gmail.com](mailto:denishill1066@gmail.com)**

## SEPTEMBER SERVICES IN OUR VILLAGE CHURCHES

**HC** = Holy Communion **EP** = Evening Prayer

**MP** = Morning Prayer, **Es** = Evensong **WfA** = Worship for All

**WS** = Word

### 1st September

10:30am Laxton HC Rev Margaret

4.00pm Wellow EP Heather B

### 8th September

10:30am Kirton HC Rev Alistair

### 13th September (Friday)

7.00pm Laxton Harvest

### 15th September (Sunday)

3.00pm Laxton Harvest Family Service


10:30 am Wellow HC Rev Margaret

### 22nd September

No services

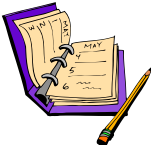
### 5th October

10:30 am Laxton HC Rev Margaret



# *DATES FOR YOUR DIARY*

## **September**



Weds 11 <sup>th</sup>	WI
Friday 6 <sup>th</sup>	Tour of Britain in Moorhouse
Fri 13 <sup>th</sup>	Harvest Supper in the Village Hall
Sat 14 <sup>th</sup>	Laxton Harvest Competition
Sun 15 <sup>th</sup>	Harvest Auction following the service
Weds 18 <sup>th</sup>	History Group
Tues 24 <sup>th</sup>	Parish Council
Sat 21 <sup>st</sup>	Coffee Morning
<b>Sun 22<sup>nd</sup></b>	<b><i>Community tidy up, Laxton church</i></b>
Sat 28 <sup>th</sup>	Southwell Ploughing Match & Show, Oxtou

## **Forward Planning:**

### **November**

<b><i>Tues 26<sup>th</sup></i></b>	<b><i>Parish Council</i></b>
<b><i>Fri 29<sup>th</sup></i></b>	<b><i>Village Hall Quiz Night (note new date)</i></b>

## **Regular Events:**

<i>Parish Council</i>	<i>4th Tuesday of January, March, May, July, September and November</i>
<i>Quiz Night</i>	<i>1st Friday March tbc</i>

**Copy Date for OCTOBER 2024 edition:  
12 noon, 16th SEPTEMBER 2024**

*Please let us have your contributions in good time. We do what we can to include last minute items, but it is not always possible. Late arrivals are unlikely to make it into print.*





# G.D. HALL LTD

(Independent Funeral Directors)

Newark Road  
TUXFORD, Newark  
Nottinghamshire  
NG22 0NA

13 Bridgegate  
Retford  
Nottinghamshire  
DN22 6AE

Tel. 01777 872929

Tel: 01777 701222

Email: [info@gdhallfunerals.co.uk](mailto:info@gdhallfunerals.co.uk) Web: [www.gdhallfunerals.co.uk](http://www.gdhallfunerals.co.uk)

Private chapel of rest

24 hour service

Golden Charter pre-payment plans available

SAIF Approved

Personal Visits to your home

**Mobile 0797 257 6020**

## New Hill Fruit & Veg



Fresh seasonal fruit and vegetables

delivered to your door

Call or Message: 07928 503467

Email: [newhillfruitandveg@yahoo.com](mailto:newhillfruitandveg@yahoo.com)

With free delivery to Laxton and surrounding villages every Monday and Thursday, why not call now to book your fresh fruit, vegetable and bread delivery slot or Find us on Facebook to see our list of produce and any daily offers.

Alternatively you can visit us at  
Clovelly, New Hill, Walesby, NG22 9PB  
Or Call 07928 503467

### HERE'S A SMALL SELECTION OF OUR PRODUCE:

- |                     |                |        |
|---------------------|----------------|--------|
| .Potatoes           | .Lettuce       | .Eggs  |
| .Carrots            | .Tomatoes      | .Bread |
| .Cabbage            | .Cucumber      | .Cakes |
| .Broccoli           | .Peppers       |        |
| .Red & White Onions | .Spring Onions |        |
| .Mushrooms          | .Soft Fruits   |        |
| .Courgettes         | .Apples        |        |
| .Sweet Potatoes     | .Satsumas      |        |
| .Baby leaf Spinach  | .Pears         |        |
| .Mange Tout         | .Bananas       |        |
| .Celery             | .Grapes        |        |
| .Garlic Bulbs.      | .Local Honey   |        |

### Pre set Fruit & Vegetable Boxes

**£15 Essentials Box**

**£19 Family Box**

We are now proud to be working along side Atherleys Bakery of Farnsfield, offering a range of fresh baked bread and cakes by pre order only.

**ORDER BY PHONE, TEXT,  
FACEBOOK MESSENGER OR EMAIL**

August, as always, sees Laxton WI's annual outing, arranged with meticulous details and a great deal of hard work by Sandra.

We had a most enjoyable day. First of all, a satisfying and beautifully cooked lunch at the Markham Moor Hotel. The menu was extensive and the food appetizing and very well presented. The sweets were particularly well received and the lavender ice cream especially so. Conversation was sociable, convivial and happy, and old and new members lingered over it, enjoying the chance to relax together.



On to Bolham Manor to experience the gardens there. Three acres of gardens surround a fine Georgian house; seemingly remote, it is in fact quite close to Retford centre but feels secluded and peaceful.

We were warmly greeted by our host, who told us the history of he and his wife buying the property over 30 years before and their long campaign to restore it. The garden is affiliated to the National Garden Scheme and all proceeds go to charity. Wander where you will, we were told and ask any questions you wish – we did!

There is nothing stuffy or strict there, beautiful borders, wandering paths, hidden corners. The plants are neither specimen stars or rigidly ruled, arranged to blend colours and styles. Established trees, shrubs and small statues blend and complement the large variety of herbaceous gems. Seats and quiet places abound to tempt the wanderer and those just wanting to sit and enjoy.

There are surprises too. An outcrop of sandstone contains caves which were once





occupied, though cold and cheerless places they must have been.

Our hosts were charming and generous. One envious plumless member was given permission to raid the well laden Victoria plum tree in the garden (of course this was photographed along with threats to publish the illegal 'scrumping' evidence).

Our host's wife, on her return home, offered envelopes to everyone to collect what seed we wished from the plants and gave dried allium seed heads to

those flower arrangers or painting members. The garden has been planted for all year enjoyment and it would be lovely to go back in early spring when a huge number of snowdrops and early spring bulbs grace the rise and fall of the land.

It was a very content group of people who gathered at the end of the afternoon. We had enjoyed each other's company in a lovely place.

Once again, thank you, Sandra.



At our meeting on 11th September we shall be having another demonstration of Indian dancing. This is from another part of India so it is a different style. Then we shall all be able to have a go.

On October 9th the subject of our talk is 'My Mum Had One of Those' by Mr. And Mrs Barrass. Later we will be able to guess the articles are which they have brought to show us and see if our mums did have them.

On November 13th we will be making Christmas cards and on December 11th we will have a Christmas social to end off another year and our 62nd anniversary.



# The Wilkinson Family of Laxton

*Can anyone help with this request from Alan Wilkinson of Australia?  
He says:*

In 2013 I paid a brief visit to Lilac Farm where I met Mrs Margaret Rose and was able to give her a photograph of the farm showing some of my ancestors - Elizabeth Wilkinson and her daughter Annie who must have lived there in the late 19th Century.

William (Elizabeth's husband) was my great grandfather's older brother. My great grandfather Richard, another brother John and a sister Elizabeth (married to William Henderson on 25/3/1873) all departed with Henderson from Liverpool on the "SS Great Britain", bound for Australia.

An older sister, Eliza married John Bartle. Both are buried in Laxton churchyard. Other sisters, Mary and Hannah Wilkinson are also buried there.



*Lilac Farm with Mrs William Wilkinson and daughter Annie*



I was told by a bridesmaid, Nellie Wilkinson (daughter of Richard and Annie, née Dewick) that this wedding photo showed two Pratt sisters, Kathleen and Evelyn, and two Godson brothers, Herbert and Len.

Kathleen and Evelyn were granddaughters of William and Elizabeth (née Small) Wilkinson.

Kathleen was Johnny Godson's mother, Jo and Andrew's grandmother, and taught at Laxton School, where she was pictured with her class. Jo's family say that this attribution is incorrect because her grandmother did not have a double wedding.



# Usedgardenmachinery.co.uk

Formerly of Beacon Court, Ollerton  
All pre season service work undertaken  
Free collection and delivery  
Ring Alan for all enquiries

**T: 01623 860343**

**M: 07594 198646**

## Mobility Scooter Repair Service

### Robert Paling Boiler Services

**07849747500**

**robpalingboilerservices@  
yahoo.com**

- Oil Boiler Servicing and Repairs
- Oil Boiler installation and commissioning
- Oil Tank Installation
- Emergency Call Outs
- Fully Insured
- Oftec Registered

### Corrine Parkes

Your local weight loss consultant

**121 Diet by Cambridge  
Weight Plan**

- Virtual or face to face consultations
- Special new client discounts
- Free first consultation

**Contact me today**

**07857 187237**

**corrine.parkes121diet@gmail.com**



## Tuxford Lawnmower Centre Ltd



*Specialist in all types of Garden Machinery*

**Sales, Service, Spares & Repairs**

**Tel 01522 779110**

**Come & Visit our Showroom Today!**

Ashcroft, Gainsborough Rd, Gorton, NG23 7HX

**www.tuxfordlawnmowercentre.co.uk**

**info@tuxfordlawnmowercentre.co.uk**

Alan sent the photographs, readers would be able to offer more accurate or additional information.



These photos show more of the wedding group (above) and sisters Kathleen (L) and Evelyn (R). Larger versions are available from Joy is

anyone thinks they may be able to help. Alan Wilkinson would appreciate any help with photos or information about his ancestors and is happy for his email address to be shared as well as to cover any costs in providing copies of photos.



## Group Oil Order

The daily price published by Boilerjuice for the average price of 1000 litres of oil in England had been following the normal summer downward trajectory with the occasional blip. Unfortunately in the second week of June the price shot up by 4p/litre to over 64p inv VAT. When Open Field was prepared last month it had come back down to just over 63p, and continued to hover around that price. It was a surprise to achieve a price of 56p/litre ex VAT.

Assuming we get a summer and the cold weather does not come back early, there are no plans to order before the pre-Christmas one in late November. If you let me know if you need some, and there is enough demand an extra order might be fitted in.

New members are welcome to join the ordering group at any time. All we ask is that you can be contacted by email, either directly or via someone else who can speak for you.

Please use my personal email if you have it. [oil@openfield.org.uk](mailto:oil@openfield.org.uk) is a general address you can use if you don't have mine, which I don't publish because of the amount of spam it generates.

Joy

# Southwell Ploughing Match and Show

This is a highlight of the year for many people in our community. It will be taking place on September 28th in Oxtun (NG25 0TD) between 8am and 5pm and will be well signposted on the day.

The show represents all the really important aspects of agriculture from preparing the land to cooking and eating locally produced food. Exhibits and competitions include ploughing, using the original horse power as well as vintage and modern tractors, to livestock judging and farm management displays, a dog show, horticultural & home produce competitions and home crafts. It is a full day out for all the family.

Anyone can enter the competitions and entry forms are available



now. Please see the web site for details of classes and how to enter.

The JCB Dancing Diggers will be showing their skills in the main ring, and there will be a Scarecrow Gathering with classes for businesses and families or groups.

The site is large and there are free tractor and trailer rides all day to enable everyone to get right round to see everything whether because it is too far to walk or just for fun.

Tickets can be purchased from people in the villages, including Paula Doyle c/o Brenda Noble in Laxton, and Jill Hoyland in Egmont or on the show's web site: **[www.southwellploughingmatch.co.uk/tickets](http://www.southwellploughingmatch.co.uk/tickets)** Tickets are £15 on the day and £13.50 in advance. Under 14s free. VIP tickets with forward parking cost £80 and admit one vehicle and 4 people.

# Festival of Bird Art, 2024, Bakewell



*White winged sandpiper 2023 winner*

Regular readers will know about the annual Festival of Bird Art held by the BDWCA (British Decoy and Wildfowl Carvers Association). It is both a display of an unusual craft where tremendous skill is obvious and the British Bird Carving Championship.

There are classes for youth, novice, intermediate and advanced carvers. Even the novices produce some amazing work. One reason why the entries are so impressive is that they have to be exactly the same dimensions as the real bird. The individual feathers have to be in the right places, numbers and colours and

to ensure they are, one of the judges is an ornithologist.

One class is for decoy waterfowl, which have to float in the river just like the real thing. To make sure they do, one hardy member of the organising committee goes for a paddle with them in the nearby river while the judges (and usually plenty of interested bystanders) observe.

In the advanced class the carvers have to make everything in their entry, including any rocks, plant material or water. The way they achieve this can be stunning and is well worth the trip to Bakewell.

Alongside the competitive entries are demonstrations of wildfowl carving and painting, walking stick making, and assorted decorative techniques.

For the practically minded, there are stockists of carving supplies, equipment, paint and wood for carving alongside displays of wildlife art.

The event takes place in the Agricultural Hall in the centre of Bakewell. This year it will be held on Saturday 14th (11am-5pm) and 15th (10am - 3.30pm) September. £2.50 admission, seniors £2, U16s free.

See [www.bdwca.org.uk](http://www.bdwca.org.uk)



*A sanderling, the 2023 runner up*

# News from the Museums of Tuxford

September is a busy month with Heritage Open Days from the **6<sup>th</sup> to 15<sup>th</sup> September**. The Walks of Life Museum is open every day between 11am and 4pm. Come and see our carts and the connections though history.



A great example is the stonemason's cart. Barbara Parry has shared with us the history of her great, great uncle, Sir Abraham Woodiwass, stonemason, who was instrumental in forming major railway lines. He was knighted by Queen Victoria.

Network Rail Innovation Centre have arranged some open track days in conjunction with the museum. They will look at how Tuxford operates with a chance to find out what is going on on the test track and to get dressed in orange to go on a track walk - only a third of a mile at the most. This is the largest test track in the country. A further date will be arranged for later in the year.

if you are interested in having a chance to take part Places are limited. To book please

contact Diane at the Museum (see below) .

On **Friday 13<sup>th</sup> September at 2pm** there will be a talk on China and connections with the museum. Refreshments will be available.

We will be holding our **Macmillan Coffee Morning on Friday 27<sup>th</sup> September at 10am**. Even if you have been before we are have lots of new stories connecting to the museum. Entry to both museums is free. Donations are welcome.

Contact [dianehunt08@btinternet.com](mailto:dianehunt08@btinternet.com) or **01777 872776** and leave a message.

The Museum of the Horse is open during Heritage Open Days from Monday to Friday 9.30pm to 4pm and Saturday 9.30am to 1.30pm. The last admission time for visitors is an hour before closing.

In celebration of Heritage Open Days, a talk on the history of Tuxford coaching and the development of the roads was arranged in September. It was so popular that it was fully subscribed and another



date will be arranged in October. Contact Sally on [curator@museumofthehorse.co.uk](mailto:curator@museumofthehorse.co.uk) or 01777838234.

There is an exhibition of the work of the internationally known local horse painter, Malcolm Coward, from 22<sup>nd</sup> September until 12<sup>th</sup> October. This will run concurrently with the Tuxford and coaching exhibition so lots to see.



## **Ossington Art Group**

**Autumn Term sessions resume on Monday  
mornings at 10.00am - 12 noon from  
9th September at Ossington Hut.**

**£7.00 per session including refreshments**

**Everyone and all abilities welcome. Study your  
favourite subjects with demos and helpful tips  
from artist Graham Laughton.**

**For further information contact Graham on  
07999 528397 or 01777 472885**

# Milton Mausoleum

Our next event is the popular **Christmas Gifts and Crafts Fayre** held in the Mausoleum from **10am – 3.30pm on Saturday 9th November**. In addition to lots of new gift ideas we have hot & cold refreshments and a raffle. Free Entry. Come and see the monument of Lady Georgiana, who died shortly after the birth of her twins sculpted with her.

We value your support for this event and look forward to seeing you on Saturday 9th November.

The Mausoleum is open every Sunday, 2-4pm until the end of September. No need to book.

**NB Sat. 7<sup>th</sup> Dec** Carols at the Mausoleum. It is never too early to book your place for this ever popular event!

*The Milton Mausoleum is cared for by the Churches Conservation Trust  
Milton Mausoleum, The Avenue, Milton NG22 0PW*



## OSSINGTON PCC

invite you to

# HARVEST FESTIVAL

**At the Church  
of the Holy Rood  
Ossington**

**On Sunday 6th  
October at 6pm**

## OSSINGTON HARVEST SUPPER

**SATURDAY 12TH  
OCTOBER**

**6.30pm for 7pm in  
the HUT**

**BYO Drinks (glasses provided)**

**Tickets:   £15 Adults  
              £8 Children**

**from Sally 07815917780  
or Heather 07896 715055**

**Proceeds divided between the  
Church and the Hut**



Ivy Cottage B&B . Main Street . Laxton . Nottinghamshire  
NG22 0NU . 01777 871254 . [www.the-goathouse.co.uk](http://www.the-goathouse.co.uk)

## VINCE DODD SERVICE & MOT

Sutton-on-Trent  
MOT Testing

☆ Servicing ☆ Repairs  
☆ Tyres ☆ Air Con

**01636 821200**

Hall Farm Stocks a Wide  
Range of Wild Bird Products,  
Accessories & More

**COFFEE LOUNGE**  
**NOW OPEN!**

Serving Coffee, Cake and Light Lunches

OPENING HOURS:  
Mon – Fri 7:30am – 5pm  
Sat 8am – 3pm  
Sun CLOSED

The Grain Store, Wadnall Lane, Weston, NG23 6SY  
(Behind the Great Wall Chinese)  
Tel: 01636 821232 [www.seedtofeed.co.uk](http://www.seedtofeed.co.uk)

@SeedToFeed.co.uk  
@buybirdseed  
@hallfarmweston

**07999 489624**



## Kitchen & Furniture Refurbishments

**We Spray:**

Kitchens, Free-Standing Furniture,  
Fitted Furniture, Wood, MDF & Paint Grade Vinyl

**25 Years Experience**

Contact: Darren  
Our Email: [scopesprayservices@gmail.com](mailto:scopesprayservices@gmail.com)  
Find us on Facebook: Scope Spray Services



**Mark Brisendon**  
Heating Engineer

T: 01636 678036  
M: 07734 450695

Oil boiler service,  
repair and installations



OFTEC registered

## **"FEET FIRST"**

**MOBILE  
CHIROPODY SERVICES**

**Sharon Foster**  
**M.Inst.Ch.P.**  
**HPC Registered No:**  
**CH18101**

**Telephone**  
**Mobile: 07946 587190**  
**for a home visit**



**DOG GROOMING AND TEETH CLEANING**  
**AVAILABLE IN SUTTON-ON-TRENT**

**CONTACT HANNAH: 07771631848**  
[tudorgrooming@gmail.com](mailto:tudorgrooming@gmail.com)

**TUDOR COURT, SHIRES WAY, GREAT  
NORTH ROAD, SUTTON-ON-TRENT,  
NEWARK, NG23 6PP.**

**G.R. GRIMES & SONS**  
**SOLID FUEL & GAS MERCHANTS**



***Competitive Prices***

Ring for a Quote

Tel:

**01777 228273**

## ***Stan The Sweep***

***Local Professional Vacuum  
Chimney Sweep***

*Solid Fuel, Oil and Gas, Aga,  
Stove Bricks, Glass & Rope  
supplied & fitted, Bird guards,  
Chimney liners, Pots, Specialist  
equipment for sweeping wood  
burners & liners. Certificate  
issued.*

*No Mess & fully insured  
Contact Stan Hutchinson on:*

**07831 661304**  
**01636 821466**

**Stan@StanTheSweep.co.uk**



Member of the  
guild of master  
sweeps

## Information on winter fuel payment changes

The government has announced that there will be changes to the Winter Fuel Payment. This means that only those receiving Pension Credit or other means tested benefits will now be eligible. This could be a worrying announcement for many people but there are other ways to get support this coming winter.

You might be able to get help if you're struggling to afford your energy bills or top up your prepayment meter. The help you get depends on:

- how you pay for your energy
- the type of energy you use
- if you claim benefits

### **Check if you can get a fuel voucher**

If you can't afford to top up your prepayment meter, you might be able to get a fuel voucher, which will come as a code in a letter, text message or email. You can use it to add credit to your gas card or electricity key. If you don't have one of these, contact your supplier to get one. If you have a smart prepayment meter you can also add the fuel voucher credit to your account online. To do this, follow the instructions on your voucher. Your local citizens advice office can help check if you qualify and complete an application.

### **If you don't use gas or electricity to heat your home**

If you can't afford to buy fuel, you might be able to get financial help. You might be eligible if you:

- rely on oil, liquefied petroleum gas (LPG), coal or wood as your main source of heating
- aren't on the gas grid

You'll need to show that you can't heat your home because you can't afford to buy fuel - or you might not be able to afford it soon. Your local Citizens Advice will need to apply for extra financial help for you.

### **Check if you can sign up to the Priority Services Register**

You can get extra help from your gas and electricity supplier by signing up to the Priority Services Register. You can sign up if you're either:

- of State Pension age
- disabled or have a long-term health condition



- considered 'vulnerable' by your energy network

You could be classed as vulnerable if you're disabled or have a long-term health condition. Your energy network might also consider you vulnerable if you:

- don't speak or read English well
- have children under 5 years old or are pregnant
- have no sense of smell or would struggle to smell gas

If you're on the Priority Services Register your energy supplier can:

- make your call a priority when you contact them
- give their engineers a password if they visit or contact you - so you know they're genuine
- move your prepayment meter if you struggle to get to it

### **Signing up to the Priority Services Register**

You'll need to fill out the form on your electricity operator's website - this is who owns and operates the electricity cables in your area. Your electricity operator is different from your electricity supplier, who sends your bills. If you need support in doing this please contact us at your local citizens advice office.

There are a number of other ways in which you may be able to access further help including:

- Grants to help pay off energy debt
- Grants for energy-saving home improvements
- Check if you can get a Warm Home Discount
- Cold Weather Payments
- Winter fuel payments
- If you use an oxygen concentrator

If you would like to explore if you are eligible for any assistance please give us a call or pop into your local drop in.

If you require further assistance or advice on this issue or any other problem you can contact us on the details below.

### **In person**

- **Ollerton office** Mon/Wed 9.30 - 2.30, 5 Forest Court, NG22 9PL
- **Newark office** Tues/Thurs 9.30 - 2.30, Castle House NG24 1BY
  - **Our outreaches** - check online our website or call us on  
**01623 861769**
- **Website** [www.ca-centralnotts.org.uk](http://www.ca-centralnotts.org.uk)
- **Email** [admin@ca-centralnotts.org.uk](mailto:admin@ca-centralnotts.org.uk)

# E Gill & Sons

## *Funeral Directors*

E Gill & Sons are proud to have provided care and advice to families in the Newark and District area for over 100 years

**24 Hour Personal Care**  
**Prepaid Funeral Plans Available**

**Newark and District**

**01636 677461**



[egillandsons.co.uk](http://egillandsons.co.uk)



## Plumbing and Heating

Alan Moorhouse

- Oil boiler installation, service & repair
- Oil tank installation & pipework
- Bathroom installation
- Sealed hot water systems
- Power flushing



**Email: [alsperfectplumbs@gmail.com](mailto:alsperfectplumbs@gmail.com)**

**Tel: 07854 069529**



OFTEC registered

## Advertising in 'Open Field'

Standard 1/6 page box: £30 p.a.(colour) £15 p.a.(B&W).

Larger sizes pro rata, e.g. £45 p.a. for 1/2 page (B&W)

Please contact [advertising@openfield.org.uk](mailto:advertising@openfield.org.uk) or  
call **01777 871506** for details and info on web pages / links.

# Minutes of the Parish Council Meeting held on Tuesday 23rd April 2024

Present: Councillors: S.Hill (chair), J. Hill, M.Hennell, R. Creighton, S.Rose  
D. Sheard

In attendance at parish council meeting: C. Wilson (Clerk)

1. **Apologies for absence:** Apologies for absence were received and accepted from Mrs Moorhouse. Mr Pringle had also sent apologies. There were no other absences.
2. **Declarations of interest:** There were no declarations of interest, direct or indirect, in any items of business on the agenda.
3. **Dispensations:** None required.
4. **10 Minutes public speaking:** No public present.
5. **Minutes of the Parish Council meetings held on 21 March 2024:**  
Deferred to May 2024 meeting.
6. **Matters arising:** Deferred to May 2024 meeting.
7. **Reports from district and county councillors:** None present
8. **Reports from councillors:** Mr Sheard updated the council on;
  - a. The litter pick. Councillors agreed that the event should be annual and arranged a year in advance.
  - b. The outcome of his communications with the Internal Drainage Board. The clerk will contact NCC Highways/Via regarding ownership of a particular area of land in the parish.
  - c. The role of RCAN and the support which it would be able to offer the village hall committee if the council were to join. It was note that Mr Sheard was a member of the committee and therefore had an interest in any discussion. He did not participate further.  
Councillors discussed the matter and decided that the clerk should invite an RCAN representative to speak at the forthcoming Annual Parish Meeting.  
Mr S Hill reported that he had been unable to attend the most recent SNG meeting which had discussed the A 616 junction lay out at Cauntton following a recent serious accident and lorries parking at Cromwell.
9. **Property matters including sports field, lease and pavilion and Glebe Field matters (if any):** Councillors had met informally to consider the outcome of the clerk's research into the circumstances in which the pavilion had been constructed and the contents of, in particular the 2010 and 2011 minutes.  
They **agreed** that the council's minutes from the relevant period and lease document clearly demonstrated that the pavilion was the property of the

council and that the committee was independent of the council. Mr Rose confirmed that he had spoken with Mr Manning of the committee to explain the position.

Councillors discussed the next steps and **agreed** that the next step to regularise the position and meet the terms of the lease would be to request the Thoresby Estate's consent for the council, as tenant, to sub-let the field to the Sports Field Committee.

The clerk formally confirmed the contents of the insurance proposal for the Pavilion and premium in the sum of £108.02. The councillors approved the arrangements.

Councillors noted that the tenants of Glebe Field had been undertaking some maintenance of the hedge. They also **agreed** to the removal of the rabbit guards.

#### **10.Planning matters:**

- a. **Applications: 24/00206/FUL - Installation of 36 Panel Ground mounted Solar System. | The Holdings Moorhouse Road Moorhouse Newark On Trent NG23 6LU** –Councillors discussed the application noting that the panels would not be visible to anyone other than the occupiers. They decided unanimously to support the proposal.

#### **b. To note planning decisions by NSDC:**

- i. 23/02039/FUL | Remove the existing roof structure and replace the damaged rafters and wallplates and replace concrete footings under the load bearing wall - Church Farm High Street Laxton NG22 0NX- Approval noted
- ii. 23/02107/OUT - New dwelling (access reserved) - Toad Lane, Laxton – Refusal noted
- c. Great North Road Solar Park – Consultation and update – Councillors noted that there had been a number of tweaks to the proposal in relation to Moorhouse. They would await the survey results. They also considered the developer's offer to address them in relation to the Community Benefit Scheme and agreed that it would be premature at this time.
- d. Compliance: No matters raised.

- 11. **Parish council use of social media:** Councillors discussed the draft code of practice and **agreed** that this should be adapted by the clerk as she considered appropriate. They also considered the advantages of a Facebook presence and required safeguards. They **decided** that the clerk should create a Facebook page for the council to disseminate information only. All councillors will have editing rights to be exercised in accordance with the code of practice but the public will have no scope to post or comment.
- 12. **Defibrillator:** Councillors noted that the funding applications had not been successful and circumstances in which the application for Department of Social Security funding had not succeeded and a potential alternative source identified.





Moving on, the group stopped to see the remarkable old forge. The decor was described by Adrian as the precursor to a neon sign.

Back across the road, two ladies welcomed the visiting group to the church with refreshments. There was time to look around before Adrian spoke. It was built on the site of a medieval chapel of rest, which was demolished in 1849. The new church was built between 1849 and 1851, to a design commissioned by the people of the parish who had raised the funds to build it. The powers that be objected, but the parishioners prevailed.

The Romanesque doorway from the old church was reused, but the newer arches are gothic in style.

One of the most interesting items in the



church is the cross which marked the original battlefield grave of Lt. Col. George Laurie, who is now commemorated on the war memorial above the cross.

The church is open daily and is well worth a visit to see the other memorials, the fittings and the stained glass.



The group then headed out into the fields to

see the flood banks and the Trent. Nearby was the site of the Carlton ferry, which one of the group recalled a relative using to get to school. The changing course of the river had isolated parts of the parish in the far side of the river.

The remains of a large wharf are visible, giving a clue to the large scale gravel extraction which once took place. Nearby are the buildings and houses associated with this work, all proclaiming their history with gravel decoration.



Adrian was talking about running another walk later in the year, which should be well worth joining.

# Egmanton Village Hall

[www.egmantonvillagehall.org.uk](http://www.egmantonvillagehall.org.uk) / 01777 871171

Please check the EVH web site or call for latest details.

- ♦ **Yoga** – with Karen Baker Mondays, 7pm - 8.15pm  
Email [karenbaker321@outlook.com](mailto:karenbaker321@outlook.com) mobile **07399 669380**
- ♦ **Pilates** - Thursdays from 5:30pm - 6.30pm with Holly Rye.  
Contact **07415436001** Email [holly-rye@hotmail.co.uk](mailto:holly-rye@hotmail.co.uk)  
**Egmanton WI** - Third Thursdays in the Hall
- ♦ **Coffee Morning: September 14th** 10 - 12 then every second Saturday of the month. Next will be **October 12th**. All welcome.
- ♦ **Egmanton Craft & Produce Show: Saturday 7th September**  
Open to everyone. Please call the number above for your schedule

*All events appear on the web site - see above*

## Reporting Potholes

A reminder about the pot hole reporting contact details are:

[www.nottinghamshire.gov.uk/transport/roads/potholes/report-a-pothole](http://www.nottinghamshire.gov.uk/transport/roads/potholes/report-a-pothole)



Or ring Customer Services on 0300 500 8080

## Laxton Defibrillator

The defibrillator in the Visitor Centre, is always accessible as neither the Visitor Centre door nor the cabinet housing is locked. Please do remember that the defibrillator must only be used once authorised by a call to 999.

*Michael Manning*

## Booking Laxton Village Hall

The Hall is available for anyone to book and bookings are taken through the web site. Please visit:

<https://www.laxtonvh.org.uk/>

# Useful Contact Details

## Defibrillator Contacts:

Neil Randall 01777 871229 & 07710 398745, evenings and weekends  
Mark Hennell 07812 908316, evenings  
Stuart Rose 07939 228353, as required  
Jeanette Geldard 07956 959135, daytime in Kneesall,  
evenings / weekends  
Anne-Marie & Geoff Rose 07961 933290 / 07957 991002, as required

## Police

Sgt 2949 Christian Hurley, Sherwood Neighbourhood Policing Team,  
Ollerton Police Station

PC Gary Sipson 07525 226575 or 101 x 800 7673

Email : [gary.sipson@nottinghamshire.pnn.police.uk](mailto:gary.sipson@nottinghamshire.pnn.police.uk)

PC2548 Deborah Bakin supported by  
PCSO 8524 Richard Dunn at Southwell

07595 074292

Web, showing other contacts: [www.nottinghamshire.pnn.police.uk](http://www.nottinghamshire.pnn.police.uk)

Danger to life or crime in progress	999
Otherwise police switchboard	101
Crimestoppers (anonymous crime reports)	0800 555111

## Medical

Tuxford Medical Centre	01777 870203
Sutton-on-Trent Surgery	01636 821023
Ollerton Surgery - Middleton Lodge Practice	01623 703266
Newark Hospital	01636 681681
Bassetlaw Hospital	01909 500990
King's Mill Hospital	01623 622515

**Cardiac Arrest? Say "Alexa Activate Emergency CPR" to an Alexa device**

Fire Safety Advice (Tuxford Fire Station) 01777 870381  
MP Mr Robert Jenrick: [robert.jenrick.mp@parliament.uk](mailto:robert.jenrick.mp@parliament.uk) 01636 612 837  
County Councillor: [cllr.mike.pringle@nottsc.gov.uk](mailto:cllr.mike.pringle@nottsc.gov.uk) 0115 977 5661  
Parish Council website: [www.laxtonandmoorhouseparishcouncil.co.uk](http://www.laxtonandmoorhouseparishcouncil.co.uk)

# **Laxton Harvest Supper**

**Friday 13<sup>th</sup> September**

**8 pm**

**in the Village Hall  
following the church service**

**Tickets £8**

***Pie, potatoes, peas, carrots, gravy  
Home-made sweets, tea and coffee***

**Everyone welcome. You don't have to be a regular at church. It is a good chance to meet up for a chat over a tasty meal.**

**Tickets from Brenda 870541 / Jean 870276 by Monday 9th September please**

## **Family Service**

**Sunday 15<sup>th</sup> September**

**3 pm in Laxton Church**

**After the service, refreshments will be served along with the presentation of prizes from the competition.**

**The auction of competition produce entries and donated goods follows after the service.**

**Everyone is welcome**