

# Open Field

50p

August 2019



*Aerial View of Laxton from the South East, July 2019*

The monthly publication of the  
parish of Laxton & Moorhouse  
[www.openfield.org.uk](http://www.openfield.org.uk)



**Priest in Charge**  
**Churchwardens** LAXTON  
 MOORHOUSE  
 KNEESALL  
 WELLOW  
 WELLOW  
**P.C.C:** **Chairman**

**Deanery contact number**

**Parish Council:** Clerk  
**Parish Councillors:** Chairman  
 Vice Chair  
 Members

**Magazine Editor**

**Flowers and Brasses Rota**

Mr & Mrs S Clarke  
 Mrs B Noble & Mrs M Beckitt  
 Mrs S Rose & Mrs R Creighton

28th July & 4th August  
 11th & 18th August  
 25th August & 1st September

**Magazine Advertising**

Mrs Joy Allison 01777 871506  
 Email: advertising@openfield.org.uk

**Photography by / Photos from**

Janet Cooke, Lynda Moore, Emily Hennell,  
 Dik & Joy Allison

**Open Field**

**www.openfield.org.uk**

**Your contributions are  
 always welcome. We can help if  
 you are not sure how to write  
 what you want to say.**

**CONTRIBUTIONS for the next edition TO  
 BE WITH THE EDITOR BY 16th AUGUST  
 PLEASE. EARLIER PREFERRED.**

Rev. Zoe Burton	01623 862818
Mrs Brenda Noble	01777 870541
Mr Simon Hill	01636 822777
Mr Ian Thorn	
Mr Ben Wells	01623 861309
<u>Mrs Jean Crofts</u>	
<u>Rev. Zoe Burton</u>	<u>01623 862818</u>
	01636 650063
Catherine Millward	01636 813387
Mr Michael Manning	
Simon Hill	
Mr Roy Hennell	Mr Jem Hill
Mr Mark Hennell	Mr John Godson
<u>Mr Stuart Rose</u>	
<u>Mrs Jean Hennell</u>	<u>01777 870276</u>

Photographs of children appear in Open Field and on the web site with the consent of their parents / carers. Open Field appears on the Web in its entirety

Cover: Aerial View of Laxton  
 from the South East  
 Photograph by: Lynda Moore



## Letter From Revd. Zoe

As I write this letter, we are preparing for garden fetes and flower festivals across our villages. These are opportunities for church and community to come together and work together as partners for the wellbeing of our communities.

Working together builds community and it foster within a community a shared sense of identity and shared values. It recognises that we are stronger together than we are alone. When we pool our resources together and share our diverse gifts, the community, as a whole, benefits (social capital). I have seen these benefits when as a Church we have partnered and worked with funeral directors, schools, Royal British Legion, foodbank, friendship clubs and care homes to name but a few.


In our churches we are thinking more deeply about the word 'Fellowship'. I wonder what does this word Fellowship mean to you? Dictionary definitions included 'company, partnership, membership...' Responses I have received from people in this community about the word 'Fellowship' include this word company again and team. One person shared that they immediately thought about the 'Fellowship of the Ring' by Tolkien – the 'Company of the Ring', those entrusted with the mission and united in one purpose to take the ring to Mordor.

Fellowship in the Bible is deeply relational and an active word – it entailed and entails disciples sharing their lives with each other and the world around them. Fellowship as: nurturing and sustaining, belonging, hospitality, serving, strengthening, encouraging, resourcing, unifying and united in a common purpose.

It is when community moves to true 'togetherness', recognising our need of each other and resourcing each other with our diverse gifts that communities are able to engage in this deeper sense of fellowship and grow in healthiness.

I wonder - how might we as members of our community grow deeper in fellowship together?

Rev Zoe



# **Lammas Day**

## **Holy Communion**

### **8.00am, Laxton Church**

### **Thursday 1st August**

**The blessing of the first sheaf of corn**  
**by Revd. Zoe Burton**  
**Followed by a breakfast of bacon butties**  
**Everyone is welcome.**  
**This is one of our traditional rural services.**



## **Lammas**

Brenda found the following in an old book:

Today is Lammas Day - Loaf-mass Day. In Anglo Saxon times a loaf made of the first flour ground from that year's harvest was offered to God. The idea came from the Old Testament with its rules about the offering of first fruit.

### **Lammas Song**

If you wait till the harvest is gathered

If you wait till the leaves all fall

If you wait till the harvest is gathered

You man never, never give at all

If you wait till you're rich before helping

You may wait till the leaves all fall

If you wait till you're rich before helping

You may never help at all



## **August Services Reminder**

Revd. Zoe wants to make sure people in this parish know that in August, there will be **no 2nd Sunday service at 10.30am**. Holy Communion will be on the **1st August at 8am at the Lammas Service**. There will be a 9am Holy Communion service at Moorhouse on the 25th August.



## Mothers' Union



We had a lovely outing in June to The Refectory at Southwell Minster, followed by a tour of the Archbishop's Palace.

Our next meeting is to be arranged. We are meeting the Archdeacon and going out for a meal.

## Farewell to Revd. Philip



On 30th June a farewell service was held at St Paulinus Church, New Ollerton to say goodbye to the Rev. Philip Howson.

Philip was a curate in training with the Rev Zoe Burton in the Ollerton Group of Churches when we joined with them in July 2016. In July 2017 he was ordained a priest at Southwell Minster by the Bishop of Southwell.

Travelling around the 12 churches for the past 3 years, he has gained a lot of experience to take him forward in his ministry.

The church was full for the service, which was taken by the Rev Zoe and the Rev Anna read the lesson.

Philip gave the sermon and then everyone received communion from him. He was joined by his wife, his mother and his dog as all the churchwardens presented him with gifts and thanked him for the time he has spent with us. We wished him well in his new job as rector of his 7 new churches in the Diocese of Ely.

# Stan The Sweep

## Local Professional Vacuum Chimney Sweep

*Solid Fuel, Oil and Gas, Aga,  
Stove Bricks, Glass & Rope  
supplied & fitted, Bird guards,  
Chimney liners, Pots, Specialist  
equipment for sweeping wood  
burners & liners. Certificate  
issued.*

*No Mess & fully insured  
Contact Stan Hutchinson on:*

**07831 661304**

**01636 821466**

**Stan@StanTheSweep.co.uk**



Member of the  
guild of master  
sweeps

## "FEET FIRST"

### MOBILE CHIROPODY SERVICES

**Sharon Foster**

**M.Inst.Ch.P.**

**HPC Registered No:  
CH18101**

**Telephone**

**Mobile: 07946 587190  
for a home visit**

## G.R. GRIMES & SONS

**SOLID FUEL & GAS MERCHANTS**



## Competitive Prices

Ring for a Quote

Tel:

**01777 228273**

## R H Goatley Electrical

Domestic, Commercial & Agricultural

**Tel: 01623 860101  
Mob: 07472 511694**



Rose Cottage,  
Church Road,  
Boughton, NG22 9JY



**Mark Brisendon  
Heating Engineer**

**T: 01636 678036  
M: 07734 450695**

Oil boiler service,  
repair and installations



OFTEC registered

# The Flagpole Returns to the Church



On Wednesday 3rd July the refurbished flag pole was re-erected in the church yard. Our thanks go to Mike Jackson and Roy Hayes for taking it down and painting it and to Mike for purchasing a new rope.

The metal pole was made by Reg Rose in 1977 and it was erected for the Queen's Silver Jubilee. The mill stone was brought from the Vicarage grounds when the Vicarage was sold and Nev Sayer mounted it in its present position. The other stone from Laxton Mill, which blew down in Mill Field on 16th July 1916, was already in the position it occupies today just outside the church porch under the

cherry tree.

When the flag pole was erected a stone plaque stating its origin was made - see below.. Thanks again, Mike and Roy.



As some people may have noticed, Will



Britnell and his men have spent another day on the churchyard. This time the old laurel tree at the east end

and two rotten yew trees have been removed. Thanks to George Noble and Roys Hennell and Haynes for helping and to George for strimming. The next job we hope to do is to remove all the ivy from the north church wall as it is becoming very overgrown and is damaging the wall. I would like to organise a working party to help with this if possible. Please can anyone who could help let me know, on **870541** and thanks again to everyone who already helps.

**Brenda Noble**



# Laxton Garden Fête

This years' fête looked to have dodged the bad weather which so often seems to arrive just when we would prefer it didn't, but almost on the dot of 6.30pm a large black cloud drifted up the road over Laxton and



delivered some heavy spots of rain. A little later a heavy shower, which lasted around 5 minutes, had some people diving for the shelter of the trees. Others had come prepared with brollies and just carried on.

There was an excellent turn out of people from Laxton, friends and extended family as well as friends from other

churches in the benefice, notably Moorhouse and Wellow. Thank you to everyone for attending and spending your money.

The Old Vicarage lawn was set out with stalls of every kind. There were the usual tempting treats of hot dogs, scones with jam and cream and ice creams - which Ruth and Paula were trying hard to sell as the evening chill developed.

The cakes on the groaning stall quickly became fewer in number, the





enormous tombola dwindled and Lesley and Margaret, charged with selling raffle tickets, could scarcely keep up with demand. There was an invasion from Hogwarts and it was curious to note that the young wizards bore a curious resemblance to youngsters familiar in the village.

Skittles were skittled, wellies wanged, bowls bowled and bean bags thrown, not to mention the resident duck being plucked and others hooked. Great fun was had by all.

The bean bag challenge looked like lasting into the night. It took Roy Saddington and Ian Creighton four play offs to split them for the winning score, much to the amusement of Joyce running the game and friends and family supporting. Roy emerged victorious at the end and generously gave his prize back for the kitty.



Thanks to everyone for their support, whether physical, financial or in any other way. It is much appreciated and the funds raised will be reported in next month's magazine.

## Pat's Plant Stall

We still have a number of bargain plants and other items for sale, so please do continue to look at the stall when you pass.

I am delighted to say that the target for the Medical Detection Charity has been reached and all money taken from the stall from now until we close it will be donated to Laxton Church funds.

Please look out for an announcement of the year's total in later issue of 'Open Field'.

A big thank you to everyone who has supported the stall with donations or by spending money with us.



*Pat Naylor*



Stockists of a Wide Range of  
Wild Bird Products  
& Accessories.



*Plus Country  
Themed Gifts,  
Garden Accessories  
& Pet Supplies.*



**COFFEE LOUNGE  
NOW OPEN**

**OPENING TIMES:**  
Monday – Friday 7.30am – 5pm  
Saturday 8am – 3pm

All Major Credit Cards Accepted

The Grain Store, Wadnall Lane,  
Weston, NG236SY  
(Behind the Great Wall Chinese Restaurant)  
Call Lesley and Deb 01636 821232  
[www.hallfarmwildbirdsupplies.co.uk](http://www.hallfarmwildbirdsupplies.co.uk)

**WILD BIRD  
FOOD SUPPLIES**



**Britnell Tree  
Services**



**All Aspects of Tree Works**

includes felling, crown reductions  
crown thinning, crown lifting, pollarding

**Gardening & Landscaping**

Reliable & Trustworthy Fully Insured &  
Qualified

All works carried out to BS3998

**Call Will today for your free quote on  
07821 342942 or 01636 702807 or  
email  
[BritnellTreeServices@gmail.com](mailto:BritnellTreeServices@gmail.com)**



**Pilates  
with Mamma**



- Improve posture, core strength, flexibility and muscle tone
- Learn to move with ease
- Maximise Injury recovery and prevention
- Increase energy levels
- Relieve stress and tension
- Improve general well-being

Experienced, professional and friendly instructor.

 **07880 508 274**

Small classes, suitable for all levels.  
Private classes also available

**[pilateswithmamma@outlook.com](mailto:pilateswithmamma@outlook.com)**

 pilateswithmamma  pilates with mamma

**Classes currently held at  
Hall Farm, Weston, NG23 6SY**

**Tracy Wint  
Soft Furnishings**

Having spent hundreds or even thousands on your decor, why settle for ready made or only a near match when it comes to dressing your beautiful new home.

*The only limits  
are your imagination*

A complete, fast, friendly and personal service with quality second to none... and at a price that will undoubtedly surprise.

For your made to measure curtains, blinds or other soft furnishings simply call an expert.

**Tracy Wint Soft Furnishings  
Egmonton  
01777 870235  
[tracywint@btinternet.com](mailto:tracywint@btinternet.com)**





# Michael Dicksbury Memorial Road Run

The 15th running of this event was blessed with a good day and a terrific turnout of 111 tractors. Over the years more and more drivers have organised trailers to offer seating for their families in various levels of comfort.

The Hennell family, with four tractors and a trailer complete with a settee and top (just in case), left Laxton at 8.45am. Mavis Beckitt enjoyed the ride with her family and George Noble had his family and the Tindalls aboard. Egmont was also well represented in the convoy which set off from Tuxford at 10am.

The morning route wended its way via West Markham, Milton and



Bevercotes into the yard at Thymar. There was great excitement at the thought of an ice cream stop, but it was not to be as they drove straight out, visiting Elkesley and the Crookford water splash where drivers with lower vehicles would have got their feet wet. After this they headed back this way, going through Walesby, Kirton and Egmont before reaching Laxton and continuing across the moor into Bottom Field.



Knowing lunch was to be at Ossington everyone thought it they were nearly there - but no! They came out onto the Moorhouse - Ossington road and went through a wood, finally emerging through the church gates

at Ossington and reaching their comfort break (picture the queue!) and lunch at Philip Jackson's farm at 1.45pm!

Refreshed and ready, they set off again after about an hour, passing Norwell church where a wedding was taking place. Shortly afterwards



the convoy was split by the rail crossing gates descending at Cromwell, leaving Mel Voce at the front of the Hennell family group to lead the catch up when the gates rose again. They crossed the A1 bridge and were surprised to find themselves going along the embankment beside the Trent which, from an elevated

viewpoint, seemed barely wide enough for the vehicles. The descent was quite exciting for some. Finally, after a tour through Sutton, Grassthorpe and the Marnhams they returned, to Tuxford at 4.45pm, having covered 44 miles.

There were a couple of items to auction and a huge raffle to draw, after which the event had made a wonderful £2,850 for Weston Park Hospital, Sheffield, in memory of Michael Ducksbury. A great time was had by all and no doubt they will all be there again next year.

## The Hallam Family at Work in the 1920s

Great, great grandfather Tom Hallam lived at The Ship Inn Farm, Moorhouse, in the 1860s-1870s.

He had been a ganger when Ossington Lake was 'excavated' by



spade and shovel and when Moorhouse Dyke was dug out to drain the bog and a road was put through the middle of the village.

Ninety years ago Moorhouse was sometimes referred to as



Moorhouse in the Bog but more often as Moorhouse Docks - note the Ship Inn.

At the same time Tom's son, Great grandfather John Thomas Hallam, lived down Sandy Lane, where grandfather Tom was born. They later moved to North Park Farm.



Grandfather Tom remembered the new road through the village and the new bridges being built. One of them, where he left his mark, 'AD Aug 1881', is still there.

The Hallam family came back to Moorhouse in 1925 after Violet Hallam met George Saxelby in the Covered Market in Newark, where their respective mothers



were selling butter and eggs.

They married and Violet came to live at Church Farm and so in a way the 'Hallams' are still in Moorhouse but 'The Ship Inn' has gone.

MWS



Ivy Cottage B&B . Main Street . Laxton . Nottinghamshire  
NG22 0NU . 01777 871254 . [www.the-goathouse.co.uk](http://www.the-goathouse.co.uk)

## EGMANTON PLANT HIRE LTD

For a full list of hire equipment  
please see:

[www.egmantonplanthire.co.uk](http://www.egmantonplanthire.co.uk)

**ANDREW BANKS**

Phone/Fax: **01777 872316**

Mobile: **07971 627588**

VAT registered

See website for current price list

## Sherwood Forest Rotary

**Supporting the Local  
Community**

**07711 802683**

**Meeting most Wednesdays at**

**South Forest Leisure**

**Robin Hood Crossroads,**

**Edwinstowe**

**Visitors always welcome**

**[www.rotary.org/1220](http://www.rotary.org/1220)**



**BRANSBY HORSES**

— Rescue and Welfare —

Sandra Clarke collects stamps for Bransby Horses throughout the year. You can leave yours with Jean Hennell in Laxton or with Joy Allison in Egmanton and they will be passed to Sandra.

Thank you.



**Gardener/  
Handy Person  
required - Laxton/  
Moorhouse area.**

Must be reliable,  
trustworthy, fit and  
able to operate light machinery  
such as ride on mower, small  
tractor etc. approximately one day  
per week, all year round.

If interested please call

**Paul 07734 906866**





# G.D. HALL LTD

(Independent Funeral Directors)

Newark Road  
TUXFORD, Newark  
Nottinghamshire  
NG22 0NA

Tel. 01777 872929

13 Bridgegate  
Retford  
Nottinghamshire  
DN22 6AE

Tel: 01777 701222

Email: [info@gdhallfunerals.co.uk](mailto:info@gdhallfunerals.co.uk) Web: [www.gdhallfunerals.co.uk](http://www.gdhallfunerals.co.uk)

Private chapel of rest  
24 hour service  
Golden Charter Pre-payment plans available  
SAIF Approved  
Personal Visits to your home  
**Mobile 0797 257 6020**

## Coffee Morning

8th August, 10.30am - 11.30am

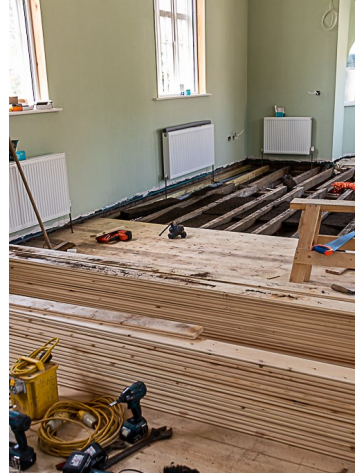
The next coffee morning will take place on Thursday 8th August at Joyce Stone's home, Farms Cottage, next to Corner Farm



Why not come and join us? Everyone is welcome to this informal group. You don't have to come every month and are welcome to pop in to enjoy some friendly, cheerful company.

Plenty of tea, cakes, and chatter.

# Village Hall Refurbishment Update



As you read this report the Hall should be just about finished, despite a slight and wet “hitch” on 9th July, when the stopcock outside the Hall sprang a leak!!

A big thank you must go to Ian Lawson and his company Sunrise. The Hall project has had to be scaled back due to rising costs in a



number of areas and we were unable to find the funding for window glazing replacement in the kitchen. Ian as a gesture to the village has taken this on at truly less than cost price so many, many thanks for that.





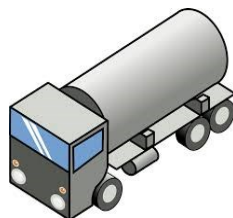
I am sure we can arrange for him to win the Quiz in December!!!!!!!

As mentioned last month, the next Quiz Night will be on FRIDAY 6/12/19 in our new Hall, we can't wait!

We hope you are all available again, please let me know if you want a team.

*Michael Manning*

## Group Oil Order



The next order is now being collected to be placed in late July / August. At the time of writing orders are coming in, but nobody has indicated that they are really low. Please make it known when you send in your order if you need it quickly. We will keep an eye on the prices and hope to achieve a good price for the group.

Your order needs to be a number of litres. The companies will not accept a request to 'fill the tank'. If in doubt and you really do want it full to the top, you should overestimate slightly and they will charge you for what your tank takes.

You can ask to join the list at any time by providing mobile and land line numbers, email and full postal address plus any special instructions e.g. guard dogs, gates with locks, difficult access etc.

Please remember, if you did not ask to remain on the list when it was updated for GDPR you will need to give your details again.

Please send orders to [oil@openfield.org.uk](mailto:oil@openfield.org.uk) as soon as possible.

Please will long term members of the group ensure you have notified any changes to your contact details e.g. new phone number or email address.

NB Once the order is placed no new names can be added.

## A Footnote to the Moorhouse Story

When members of Laxton History Group were researching for their HLF funded booklets, one of the original letters seen in the Manvers Collection at the University of Nottingham was sent to the Lord of the Manor asking for the opportunity to rent a property in Laxton because it was much less wet and they were both suffering terribly from the general wetness of Moorhouse.

# Laxton History Group



At our June meeting, Brian Howe returned with 'Treasures in the Attic', named after his feature in 'Best of British'. The objects are described and readers estimate the values, which are revealed elsewhere in the publication.



Brian challenged us to guess the star of the show and its value. He described the items on display while members shared their memories and experiences of similar items and times.

We heard Tommy Bruce's 'Buttons & Bows' while Brian talked about his button tin. Most of us have one, but in Brian's was an original 1936 Butlins Camp badge of the Jolly Fisherman from Skegness.

A somewhat faded Chad Valley tin model of Donald Campbell's Bluebird car made in Sutton in Ashfield by Metal Box followed. This was without its box.

Next came the Dansette record player on which Brian had played Tommy Bruce, followed by an original membership card and badge from the Odeon Cinema Club. The promises young members had to make to join made us laugh. You had to let the cinema know if you were unwell and couldn't go!

Most of us recognised the shop bell and admired the spike top glass sweet jar. How sad that many were destroyed in a demolition.

Brian showed a stone ginger beer bottle from Boots and told us a little of the company's history. This predated glass and was single use.

One member remembered 'World Cup Willy' who, we learned, was designed by Reg Hoy who illustrated for Enid Blyton.

To tie in with this summer meeting (what summer?), Brian played 'Summer Holiday' to introduce his tin bucket with illustrations of Disney's Mickey and Minnie Mouse. Two cameras followed – a Kodak Brownie 127 and an Instamatic with its built in flash and film cartridges.



Leaving the seaside we met Sooty and Sweep, complete with magic wand and heard about their origins.

Most members recognised the Clarice Cliff 'Crocus' bowl, which is one of Brian's treasures. Unusually it had painted flowers on



the inside. This was popular as the most valuable item. Another popular choice was a wooden chair dating to about 1899, with a double sided enamel advertising panel forming the back. This had been protected by being painted white in the 1960s, but was later stripped by dipping and returned to its former glory. These chairs would have been presented to shops across the country for the comfort of waiting customers.

The penultimate item was a blue and white banded rolling pin by T Green. We learned that a red and white or black and white one would be worth a small fortune because they are so rare.

Finally we saw a tiny crock cream jar bearing an illustration of a horse drawn milk cart. This also was a disposable item and was tiny because cream was an

expensive commodity.

Brian then invited everyone to suggest the star of the show. The car was popular and most items had their supporters. He then went through giving the value of each. He also revealed one he had overlooked – a huge fibreglass beer bottle reminding us of what Dad enjoyed about his seaside holidays.

At the bottom end, the cameras were worth only £5 each and Sooty & Sweep just £10 the pair. The car was valued at £50, but would

have been £150 in pristine condition with its box. The record player, sweet jar, beer bottle and

bowl all came in at £150 with the chair at £700. The big surprise was the revelation that the cream jar was the real star at £1,000+. One, not as good as this, is due to be sold shortly and Brian promised to let Jean know what it sells for. More anon ...

We do not meet in August so our next meeting will be on September 18th in Laxton Village Hall, when John Whitfield will be returning by popular demand, this time talking about '100 Years On: Britain and the Great War.'



## CHURCH SERVICES FOR OUR VILLAGE CHURCHES

HC = Holy Communion   EP = Evening Prayer   MP = Morning Prayer  
Es = Evensong   WfA = Worship for All

**28th July Trinity 6**  
**9am Moorhouse HC**  
**10.30am Kirton HC**

**1<sup>st</sup> Aug Lammas Service**  
**8am Laxton HC**

**4<sup>th</sup> Aug Trinity 10**  
**9am Kirton HC**  
**3pm Café Church – St Paulinus Community & Church hall**  
**4pm Wellow EP**

**11<sup>th</sup> Aug Trinity 11**  
**9am Walesby HC**  
**4pm Egmanton EP**

**18<sup>th</sup> Aug Trinity 12**  
**9am Egmanton HC**  
**10.30am Boughton, St Matthews HC**

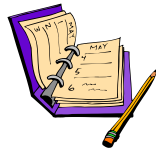
**25<sup>th</sup> Aug Trinity 13**  
**9am Moorhouse HC**  
**10.30am Wellow HC**

**Tuesday 9<sup>th</sup> August – ‘Open Vestry Hour’ for Christening and wedding enquiries:** Revd Zoe can be reached at the Vicarage on (01623) 862818 work mobile: 07983 946930  
[revzoe65@gmail.com](mailto:revzoe65@gmail.com)

**Midweek Holy Communion Services** at St Giles, Ollerton Village - 10am on Wed 14<sup>th</sup> & Wed 24<sup>th</sup> August. The church will remain open after the service until 1pm



# *DATES FOR YOUR DIARY*



**2019**

**August 8<sup>th</sup>                      Coffee Morning**

**August 14<sup>th</sup>                      WI                                      Venue tbc**

## ***Forward Planning***

*Alternate months, 4th Tuesday                      Parish Council*

**Sept 4<sup>th</sup>                      WI Fashion Show - LVH**

**Sept 7<sup>th</sup>                      Egmanton Craft & Produce Show**

**Sept 14<sup>th</sup>                      Notts Historic Churches Sponsored Bike Ride**

**Sept 28<sup>th</sup>                      Southwell Ploughing Match                      Thoresby Estate**

**Oct 11<sup>th</sup>, 12<sup>th</sup>, 13<sup>th</sup> Laxton Harvest Weekend**

**Oct 15<sup>th</sup>                      History Group Trip to Oxford**

**Dec. 6th                      Quiz Night**

**Copy Date for September: 16th August.**

Please ensure we receive your contributions for the magazine by this date. We cannot guarantee to publish anything received later. We appreciate receiving items as early as possible. Thank you.

## **Agricultural Repairs Fabrication**

- MOBILE WELDING & REPAIRS
- IN HOUSE DESIGN & FABRICATION
- BUILDINGS..BEAMS..GATES..RAILINGS

**Mild Steel Stainless Steel Aluminium**  
**07968 329108 01636 822708**

## *The Only Way is Gelish*

**Mobile Nail Technician**

**Forget False Nails**

**Grow your own with the aid of Gelish**

**Call Kimberley 07968 166250**

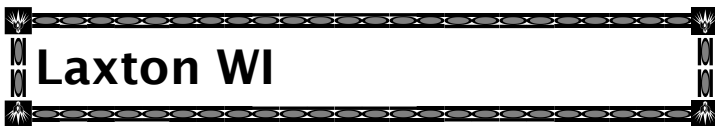
Gelish is a gel based polish which is applied to your natural nails and cured in an LED lamp. Gelish is a high shine and long lasting finish which lasts up to 2-3 weeks and helps protect your nails so they can grow naturally

## **....FIRE WOOD WANTED....**

- TREE REMOVAL SERVICE
- DAMAGED & FALLEN TREES
  - DISPOSAL OF WOOD
- UNWANTED LOGS & PALLETS COLLECTION
  - FULLY FORESTRY TRAINED
  - SMALL FEES MAY APPLY

**CALL JIM ON 07968 329108**





## Laxton WI



Our July meeting was low on numbers due to holidays and the majority of members having attended the funeral of our member and friend, Judy Spencer earlier in the day. Judy was remembered with a minute's silence at the start of the meeting and our thoughts were also with her sister Margaret, another of our members and Steff, a former member.

Brenda recapped on recent events. Several members had attended a programme planning event in Wellow, which involved finding ideas hanging in the trees and bushes. They came away with a list of possible speakers for us and in the near future we will have the opportunity to vote for those we would like to hear.

Also on the garden theme, other members had thoroughly enjoyed the Q&A session and the walk round the garden at Floral Media.

Our team in the County Quiz at Edwinstowe had excelled themselves, scoring an excellent 68/90. Less fortunate were those who had wanted to go to the steel pan drumming session, but been unlucky in the ballot.

We're pleased to hear from the Agricultural sub committee who organise the WI participation in the Notts Show. They thanked us for taking part in the group competition. This was decided by public vote, with Lambley winning by a wide margin. New measures were in place this year to prevent multiple voting!

Brenda thanked Sandra for organising a very successful outing last month.

There was a long list of events to sign up for right through to October and these will be brought back again next month. We are impressed that Lesley has signed up for 'Rafting and Shooting'. The morning virtually promises a dunking in the lake at Walesby and in the afternoon you can choose between rifle shooting and tomahawk throwing. That has to be about as far from 'jam and Jerusalem' as you are likely to get! We await her report with interest.

Other opportunities include Encaustic art and Chinese brush painting.

There was a short discussion about our forthcoming Fashion Show (see separate advert) on 4th September, when we hope to be back in Laxton.

We then turned our attention to our speaker, Patsy Rayner. A former English teacher, she has a love of literature and for leisure, loves her garden so it was a pleasure for her to research her talk on 'Plants in Literature'.

Patsy talked about how flowers and other plants had been regarded and

Milton Mausoleum, The Avenue,  
Milton NG22 0PW  
**The Friends of Milton Mausoleum**



Present  
**A Hog Roast**  
with  
Entertainment by



**Limited Ability**



**Saturday 14<sup>th</sup> September  
2019 at 7pm**

**Bring along your own drink and  
glasses**

**Tickets £8    Entry by ticket only**

**Book early to avoid disappointment!**

For tickets please contact  
Bobby 07708 042065 or Jenny 07791  
527569 or via email

[milton.mausoleum@outlook.com](mailto:milton.mausoleum@outlook.com)

Milton Mausoleum is in the care of The  
Churches Conservation Trust

## **Egmanton Craft & Produce Show**

**NEW Scarecrow  
competition to be  
staged at the Hall**

The 21st Egmanton  
Craft & Produce Show  
takes place in  
Egmanton Village Hall  
on Saturday 7th  
September.

Schedules are now  
available from Pat's  
stall or call 871171.  
Open to all. Classes  
for all ages. See  
schedule for all  
details.

## **Heavy Duty Tanalised Fencing & Gates**

**Free estimate or advice**

- Agricultural
- Post & rail
- Tanalised post & panel
- Equestrian
- Picket
- Tanalised made to measure gates

**Tel Kenny 01777 870337,  
Mob 07723 036543  
Vicarage Cottage, Laxton**





referred to through history. She began by reminding us that various of the parables in the Bible relate to plants. Roman and Greek texts include many references to plants, but their basis is mainly medicinal and culinary, relating to the health benefits of food plants.

It is clear on religious texts that flowers are used to

spread the Christian message. They are used to help uneducated peasants understand complex messages.

It was not until the Middle Ages that plants are referred to for their beauty alone and after this flowers began to be used in issues relating to human feelings and social change.

Plants began to develop as we know them, with flowers and a relationship with insects for pollination around 140 million years ago. Many of the plants we know today were brought here by the Romans. A Roman scout, advising on whether this island was worth invading to Rome declared that, among other things, it was fertile and good for all plants except for olives and the vine. Other plants developed from seeds introduced by returning Crusaders, both deliberately in seeds they transported with care and accidentally through seeds which made their way into kit and animal hair and feet.

The names of some herbs gives away how they were seen. Thyme derives from the Greeks thumbs, meaning courage and it was used for its anti inflammatory properties. It was often embroidered onto a handkerchief for a soldier. Sage derives its name from the Latin salvere, meaning to be well and it is known as the cure all, while rosemary is thought to improve mental well-being. Greeks are thought to have worn it as garlands when taking exams.

Jayne Eyre has many plant references relating to emotions and morality. William Shakespeare had a tremendous knowledge of plants and used them frequently in descriptive terms.

Patsy started a lively discussion with mention of 'pagels' being a family name for cowslips. This led on to sharing stories about family floral traditions, interestingly including bringing in holly in a similar way to first footing, and definitely *not* having holy in the house!

Next month on 14th August, we will be hearing from Sally about the national AGM in Bournemouth and we will share a 'faith supper'.

# Laxton's Historic Open Field Farming System and Sale of the Laxton Estate



Photo © Chris Belton

Sir John Starkey, Chairman of the Visitor Centre Trust said that it was now general knowledge that The Crown Estate has a preferred bidder. Andrew Fallows from The Crown Estate informed the meeting that all tenants had been notified of the identity of the preferred bidder as “The Trustees of the Thoresby Settlement”.

He also confirmed that it would be towards the end of the year before the process of the sale had been completed as due diligence would be a lengthy process.

*Michael Manning*

## Dog Fouling

Laxton & Moorhouse Parish Council have asked the Newark and Sherwood Council dog warden to visit the village and we await the visit and report from her.



## The Dovecote Inn

The Dovecote Inn is now moving to a more “Rustic” menu from July and we look forward to seeing the new options and menu. As ‘Open field’ went to press the online menu was not available.

Sunday  
Special  
Meal Deal  
from 1st week Aug  
£14.95pp  
Pappadum & Chutney  
Starters, Main Course, Rice &  
Nan, Coffee or Kulfi Ice Cream



**RAJDHAANI**

**Authentic Indian Cuisine & Bar**  
**Tel: 01623 860648 / 07751485246**



**Main Street, Kneesall, NG22 0AD**

(Formerly known as The Angel Inn)

**Free Car Park Available**

Takeaway Service Available (collection only)

**Open: 7 days a week, including Bank Holidays, 5.00pm - 10.30pm**

**[www.rajdhaanirestaurant.co.uk](http://www.rajdhaanirestaurant.co.uk)**

**Email: [reservations@rajdhaanirestaurant.co.uk](mailto:reservations@rajdhaanirestaurant.co.uk)**



## Rotary Club 'Bras for Africa' Collection

The Rotary Club of Sherwood Forest's collection of lightly used bras and new pants for Africa continues to go well.

They are everyday items to us and it is hard to understand the huge difference they can make to women in countries where simply having underwear can protect you from unpleasant incidents and unwanted attention.

If you are able to donate anything, please drop off at School House, Laxton, next door to the Village Hall. Thank you to everyone who has already donated.



## The Dukeries Singers



Well we had the refreshing rain I hoped for last month but moderation seems to be a disappearing aspect of our weather. The lawn (grass) is showing patches of green but the snails in the garden have been

having "a right birthday," as my Mother would have said. Lace curtains seems to be the new fashion in foliage.

August will be a rest and recuperation time for the Choir. We finish our rehearsals on Wednesday 31 July 2019 and return refreshed and rarin' to go on Wednesday 4 September 2019. No doubt we shall be delving into our Christmas pieces. Christmas has a peculiar facility for lying in wait and then appearing like magic from around the corner. We are already taking bookings for Christmas Concerts and Carol Sings, so if you would like to book the Choir for your Celebration, Fund Raising event or "bit of a do," our secretary Pauline on 07951609217 would be pleased to hear from you. Our rehearsals take place every Wednesday evening from 7-30pm. until 9-00pm. upstairs in the Theatre Refreshment Area at the Dukeries Academy, Ollerton. This is best accessed via the Leisure Centre Entrance and car park.

You can find out all about the Choir and watch us in rehearsal and in concert on [thedukeriessingers.com](http://thedukeriessingers.com) and we are also on Facebook, Twitter and You Tube. A relaxing and weed free Midsummer to all



# Dukeries Woodturning Society

You can't accuse us of not planning ahead. In addition to a full programme for the year, tickets are now available for our Christmas Social on Sat 14th December from Gordon at £12.50 a head. This is a new venture thanks to the facilities at our new venue. We are delighted to welcome local artist Carlo Santana (ex Paper Lace) to entertain us and there will be a professionally catered buffet. Members friends, guests and anyone who fancies coming all very welcome.

Our **28th August** meeting features the ever popular pocket dynamo that is Emma, best known as Tiny Turner. She always entertains us and we look forward to her visits.

There is another hands on session on **21st August**, when there are three lathes available for members to use. This is your chance to have a go and to ask questions, so we hope you will give it try. Our normal attendance fee of £5 applies, with 'first timers' free. We will also sharpen your tools during these sessions.

For more information please visit [www.dukerieswoodturning.org.uk](http://www.dukerieswoodturning.org.uk) or call Gordon Fisher on **01623 464986** / Michael Manning on **01777 870844**

## Ceramics at Doddington Hall

Doddington Hall has now become an established venue for its sculpture exhibition every other year. This year is the 'year off' and instead there is an opportunity to discover the incredible ceramics collections of Doddington Hall gathered over 300 years in a special exhibition. There will be new displays, talks & tours.

The latest in collectable ceramics created by renowned national and international ceramists will be presented with the best works from the best of Lincolnshire makers.

There will be workshops and 'meet the maker' sessions for all the family. Visitors will get the chance to have a go at handling clay, throwing a pot and painting ceramics.

The event will run between 27th July – 8th September 2019. More information will appear on their web site as it becomes available. The Stable Yard Galleries are free to enter and open daily. The Hall and gardens are well worth a visit. An admission charge applies.

Opening hours: Wed, Fri, Sun & Bank Holiday Monday, 12 noon - 4.30pm (Gardens 11am).

[www.doddingtonhall.com](http://www.doddingtonhall.com)



# REFLEXOLOGY

IN YOUR  
OWN HOME

**GEORGINA OSTICK** IIR AOR

**TUXFORD BASED - CLINICAL REFLEXOLOGIST**

**tel 01777 871244 mob 07943 490368**

## Beeby Plumbing

All plumbing and heating enquiries  
& 'call-outs', please call

**Guy Beeby**



**07792 484876**  
**01636 822103**

C&G, NVQ Level 2, BPEC qualified,  
fully insured.

- Domestic Plumbing •
- Emergency Call-Out •
- Bathroom Installations & Repairs •
- Outside Plumbing •
- Central Heating Installations & Repairs •
- Under Floor Heating • Leaks & Bursts •
- Oil Boiler/Tank Installations & Service •

*.....from 'leaky' taps to full installations!*

MUSIC  
THEORY  
AND  
PIANO  
ROYAL  
SCHOOLS



Quality Paintings  
or Drawings  
in any Media

**GRAHAM  
LAUGHTON**  
B.A.

PICTURE  
FRAMING  
SERVICE &  
RESTORATION



**01777 472885 or  
07999 528397**

[grahamlaughton.com](http://grahamlaughton.com)

[grahamlaughton@btinternet.com](mailto:grahamlaughton@btinternet.com)

## Robert Paling Boiler Services

**07849747500**

**[robpalingboilerservices@  
yahoo.com](mailto:robpalingboilerservices@yahoo.com)**

- Oil Boiler Servicing and Repairs
- Oil Boiler installation and commissioning
- Oil Tank Installation
- Emergency Call Outs
- Fully Insured
- Oftec Registered

# Plumbing and Heating

Alan Moorhouse

- Oil boiler installation, service & repair
- Oil tank installation & pipework
- Bathroom installation
- Sealed hot water systems
- Power flushing



OFTEC registered

**Email: [alsperfectplumbs@gmail.com](mailto:alsperfectplumbs@gmail.com)**

**Tel: 07854 069529**

**Bed & Breakfast**

## **Brecks Cottage**

Green Lane, Moorhouse, Newark

Nottinghamshire NG23 6LZ

Telephone: 01636 822445

[www.breckscottage.co.uk](http://www.breckscottage.co.uk)



**E. GILL & SONS LTD**  
*Funeral Directors*



*'Our family caring for your family'*

The Gill family are proud to have provided  
care and advice to families in the  
Newark and District Area for 100 years

For peace of mind we offer the  
E. Gill & Sons Funeral Pre-payment Plan  
55 Albert Street, Newark, NG24 4BQ  
01636 677461



## Sandwich Shop & Café

3 Eldon Street, Tuxford

☎ 01777 872032

© [www.thecrustycobtuxford.co.uk](http://www.thecrustycobtuxford.co.uk)

The Crusty Cob

Open from

7.45am – 3.30pm Monday – Friday

8.00am – 2.00pm Saturday

### A wide selection of:

- ♦ Sandwiches ♦ Wraps ♦
- ♦ Panini's ♦ Flatbreads ♦
- ♦ Jacket Potatoes ♦
- ♦ Maloney's Pies & Sausage Rolls ♦
- ♦ Teacakes and Scones ♦
- ♦ Cakes & Pastries ♦

And many more..... to eat in or takeaway.

Please check out our reviews on &   
to get a real feel of our food and service.

♦ **Buffets & Outside Catering** ♦

♦ **Weekday Delivery Service** ♦  
please enquire for further information.

### Bistrot Open

**Each Saturday evening from  
6.30pm**

**Fully licensed bar selling a  
wide range of beers, wines  
& spirits.**

**Room also available for  
private hire.**

**See our website/FB page for  
menu updates and further  
information.**

*Extensive parking available to the rear of the  
Sun Inn & in the Working Men's Club.*



# LEE DOYLE

## Building Contractor

New Houses, Extensions,  
Groundworks, Roofing,  
Damp-proofing & Dry Lining,  
Paving & Patios, Minor Repairs.

10 Elm Tree Rise  
Kneesall  
Newark  
Notts



**Stuart Rose**

DESIGNER AND MAKER OF  
ORNAMENTAL IRONWORK

SECURITY GRILLES, RAILINGS, SCROLLWORK &  
GATES FOR HOME & BUSINESS  
GENERAL BLACKSMITHING  
IRONWORK REPAIRS & WELDING  
BOTTOM FARM, LAXTON

TEL: 01777 871702, [www.laxtonnotts.org.uk](http://www.laxtonnotts.org.uk)



**KSR ACCOUNTANTS**

KSR Accountants  
The Old Buttermarket  
Market Place  
Tuxford  
NG22 0L

01777 872078 / 07710  
430593



# Chernobyl Children's Lifeline Appeal



The Chernobyl nuclear disaster happened 33 years ago but is still fresh in the memory. Families there face many more years living with the resulting problems.

We have been a registered charity for over 25 years and have helped thousands of children from that area. Our link in Newark & Sherwood works with the school in a village in Belarus to bring children aged 9-11 from the poorest families here for a holiday accompanied by a teacher/interpreter. We organise a full program of events, including swimming, rock climbing, a seaside rip, sailing, soccer school and archery to give the children a range of experiences and a lot of fun!

We need host families, able to set aside 2-3 weeks at the start of the school summer holidays and who can attend the events with the Belarusian children they host. Hosts may have their own children (who are very welcome to join in at no cost) or may have grown up children and empty bedrooms!

Language is not an issue as the children learn some English at school and translation apps on our phones work well.

The children would never have this, the adventure of their childhood, without the hospitality of our hosts. They go home with memories, new confidence and ambition.



If you would like to help but can't host, we also need clothing, 135 - 150cm (4'6" – 5') height and footwear, sizes 33-39 (1-6). We need shoes, trainers, walking and football boots, summer and winter clothing, coats and sleeping bags to use at camp plus old suitcases (with wheels) to send the children home with clothing to last them the next couple of years.

Our charity shop in Clowne is our main source of funds. I take items we cannot use directly and any other donations to raise funds for the children's holiday next year! If you have anything to donate, please let me know.

There is much more detailed information on [www.ccllnewark.org.uk](http://www.ccllnewark.org.uk) or we will visit you to discuss hosting. Get in touch via

**committee@ccllnewark.org.uk** or ring Helen on **01636 678133**. We also offer a presentation and Q & A locally if enough people are interested.

**Helen Rushby**, Averham

## Recent Bonus Ball Winners

Date	No	Name
15/6/19	29	Ian & Elaine
22/6/19	11	ROLLOVER
29/6/19	27	Brian C
6/7/19	9	Roy and Sue S

We have various numbers available. Here is the up to date list of the 14 spare numbers: 1, 2, 11, 24, 26, 28, 42, 46, 51, 52, 53, 56, 57, 59. Please contact Ken Shep on 870605 / Mike Manning 870844. Thank you.  
*Michael Manning*

## Laxton History Group Trip to Oxford

We are going to Oxford by minibus / coach on Tuesday 15th October to see the wonderful 1635 map of Laxton by Mark Pierce on public display in the Bodleian Library's Talking Maps' Exhibition.

There will be some stunning historical maps on display as well as modern pieces. We have a waiting list in case of the inevitable changes of plan. Please call Jean on **870276** if you would like to join us.

## Muskham Art Group Annual Exhibition

**12th & 13th October 2019**

**Open 10am - 4pm**

**South Muskham Village Hall**

**Come and enjoy a warm welcome  
Home made refreshments and the chance  
to view the work of local artists  
Admission free**

**Laxton WI presents**

## Laxton Village Hall Weds 4th September

**£6, including glass of wine and nibbles**

***Refreshments served at 7.00pm  
for prompt 7.30pm start of show***

**Tickets from Brenda Noble, 01777 870541**

**Raffle, up to 75% off big brands, sizes 6-30**

# Tuxford Young Farmers



The main event for us this month was our charity tractor run on the 23rd June.

56 vintage tractors took part and set off from Hall Farm Weston on a route through Tuxford, Bevercotes and on to Thoresby Hall where we had lunch in front of the Court Yard. Suitably fed and watered, we set course for the return trip via Walesby and Laxton to arrive back at Hall Farm where the draw for the raffle took place.

On the day we raised £1470 for our Charity, Forget -Me-Not, at Tuxford. Well done everyone!!!

A huge thank you goes to the Bough family and to all the local businesses for their generous donation of raffle prizes.

Tuxford Young Farmers meet on Wednesdays at 7-30pm at Hall Farm, Weston and are happy to see new faces, so please come along and find out what we are all about.

*Emily*

# **Wagstaff Construction**

## **Installation of Log Burning and Multi-Fuel Stoves**

Twin Wall Chimney Systems  
Flexible Flue Liners  
Fireplace Design and Build  
Pre Installation Surveys  
Service and Maintenance



Tel: 01777 872707  
Mob: 07816520826



## **Tuxford Lawnmower Centre<sup>Ltd</sup>**

*Specialist in all types of Garden Machinery*  
**Sales, Service, Spares & Repairs**



# **01777 871983**

**Come & Visit our Showroom Today!**

Ashvale, Tuxford. NG22 0ND

**[www.tuxfordlawnmowercentre.co.uk](http://www.tuxfordlawnmowercentre.co.uk)**

**[info@tuxfordlawnmowercentre.co.uk](mailto:info@tuxfordlawnmowercentre.co.uk)**

## **Do You Need a Mole Catcher?**

**No mole**



**No fee**

## **Call Chris on 07780 714800**

Email: **[thelaxtonmolecatcher@gmail.com](mailto:thelaxtonmolecatcher@gmail.com)**



## Drivers Targeted with Fake Fines

### What you need to know

Action Fraud have received an increase in reports and intelligence where elderly victims are being targeted by individuals purporting to be police officers or traffic wardens. The victims are being approached whilst parked in a car park and are told by the suspect that they have parked illegally or broken a speed limit and a photo has been taken of their car for 'evidence'.

Victims are advised that they will face a substantial penalty fine unless they pay a smaller upfront fee immediately. Victims, who opt for paying the smaller penalty, will be directed to a parking meter and asked to enter their card and PIN. These parking meters have been tampered with by the suspect in order to retain the card.

Once the victim inserts their card and are asked for their PIN, the victims are shoulder surfed for their PIN by the suspect. Once victims input their PIN, the card is retained by the machine and victims are told by the suspect to seek help from the company who operates the parking meter or their bank.

### What you need to do

- ⇒ If you are suspicious about the **authenticity** of the fine, do not pay it until you have **verified** it with your local council.
- ⇒ Always **shield your PIN** from view when using an ATM machine, and **never** share your PIN with anyone.
- ⇒ If your bank card is retained by an ATM machine, contact your bank **immediately** to inform them.

#### Advertising in 'Open Field'

A standard 1/6 page box:

- ✿ £30 p.a. (colour) for 12 issues,
- ✿ £15 p.a. (B&W).

Larger sizes pro rata

- ✿ e.g. 1/2 page £45

Please contact

[advertising@openfield.org.uk](mailto:advertising@openfield.org.uk) or  
call **01777 871506** for details and  
info on web pages / links.

## Egmanton Village Hall

[www.egmantonvillagehall.org.uk](http://www.egmantonvillagehall.org.uk) / 01777 871171

**Please check the EVH web site or call for latest details.**

- ♦ **Yoga with Greg** – Tuesdays at 7:30pm
- ♦ **Laxton History Group** - No meeting in Hall in August
- ♦ **Egmanton WI** - Thurs 15th Aug - *check nearer the time, may be out*
- ♦ **Children's Dance Classes** - Sat mornings (Jill, 07790 601877)
- ♦ **Computer Problems?** - Call **01777 871171**.

If your computer is misbehaving or you need help setting up a new one, please call. Donations to Egmanton Village Hall in lieu of fee.

### LAXTON VILLAGE HALL QUIZ NIGHT

The next Quiz Night will be on **FRIDAY 6/12/19** in our new Hall, we can't wait!!

We hope you are all available again, please let me know if you want a team. Michael Manning (**870844**)

## Maplebeck Village Hall Events

[www.maplebeck.org.uk](http://www.maplebeck.org.uk) / 01636 636421

### Regular Activities

Yoga	Tues 9.45am and Fri 9.30am
Clubbercise	Thurs, 8.30pm
Walkers	Weds, from approx.10.00am
Kurling (without the ice!)	2nd Weds monthly 7.30pm
Book Club	(3 <sup>rd</sup> . Sep.) 7.30pm

### Upcoming events and Films (all 7.30pm)

**2019**

**Tuesday 10th September, 7.30pm, Film Stars Don't Die in Liverpool (15)**

## Useful Contact Details

### Defibrillator Contacts:

Neil Randall 01777 871229 & 07710 398745, evenings and weekends  
Pat Naylor 01777 870601, evenings  
Jeff Naylor 01777 870601, as required  
Mark Hennell 07812 908316, evenings  
Stuart Rose 07939 228353, as required  
David & Linda, Dovecote Inn 01777 871586, as required  
Jeanette Geldard 07956 959135, daytime in Kneesall,  
evenings / weekends  
Anne-Marie & Geoff Rose 07961 933290 / 07957 991002, as required

### Police

PC Gary Sipson 07525 226575 or 101 x 800 7673  
Email : [gary.sipson@nottinghamshire.pnn.police.uk](mailto:gary.sipson@nottinghamshire.pnn.police.uk)

PCSO 4741 Keith Crowhurst 07889 702823 or 101 x 8007671  
Email : [keith.crowhurst4741@nottinghamshire.pnn.police.uk](mailto:keith.crowhurst4741@nottinghamshire.pnn.police.uk)

Web, showing other contacts: [www.nottinghamshire.pnn.police.uk](http://www.nottinghamshire.pnn.police.uk)

Danger to life or crime in progress	999
Otherwise police switchboard	101
Crimestoppers (anonymous crime reports)	0800 555111

### Medical

Tuxford Medical Centre	01777 870203
Sutton-on-Trent Surgery	01636 821023
Ollerton Surgery - Middleton Lodge Practice	01623 703266
Newark Hospital	01636 681681
Bassetlaw Hospital	01909 500990
King's Mill Hospital	01623 622515

Fire Safety Advice (Tuxford Fire Station)	01777 870381
MP Mr Robert Jenrick: <a href="mailto:robert.jenrick.mp@parliament.uk">robert.jenrick.mp@parliament.uk</a>	01636 612 837
County Councillor: <a href="mailto:cllr.mike.pringle@nottsc.gov.uk">cllr.mike.pringle@nottsc.gov.uk</a>	0115 977 5661

Parish Council website: [www.laxtonandmoorhouseparishcouncil.co.uk](http://www.laxtonandmoorhouseparishcouncil.co.uk)

*Another of Lynda Moore's photos from her flight over Laxton.*



*Nearly there! The interior of the newly refurbished Village Hall,  
9th July 2019*

